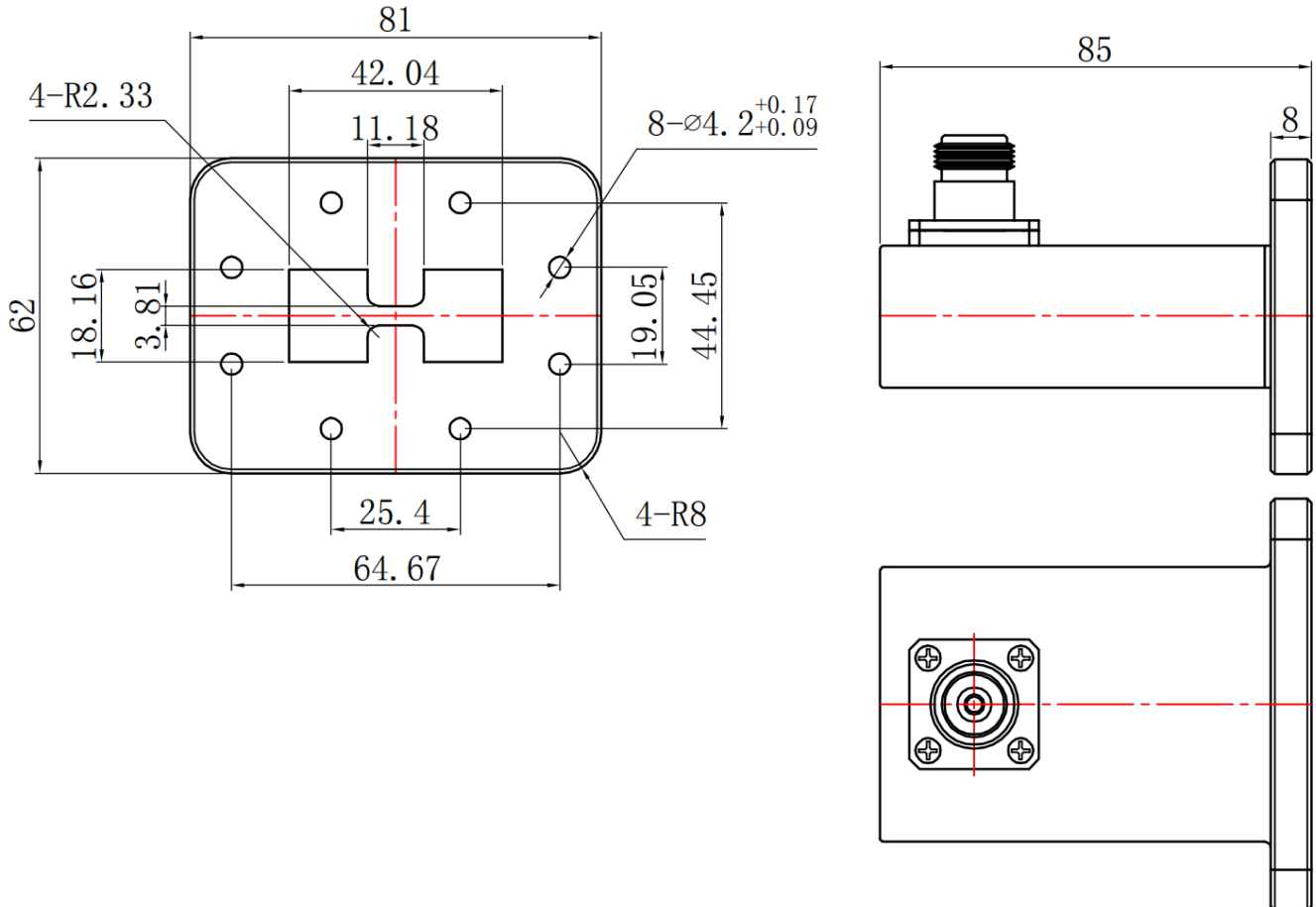




Right Angle Double Ridge Waveguide to Coax Adapter, RWRD250N 2.5-8GHz, WRD250 to N Female, FPWRD250 Flange

Dimensions(mm) Tolerance $\pm 1\%$

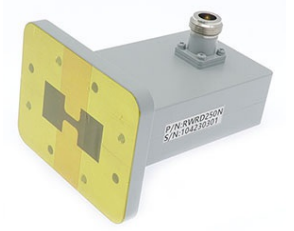


Electrical & Environmental

Frequency Range	2.5-8GHz	Impedance	50 ohm	VSWR	1.3 max
Input Avg Power	150W @25°C	Peak Power	3000W	Insertion Loss	0.7 dB max

Mechanical & Product Information

Product Number	RWRD250N, H-Grade	Body Geometry	Right Angle
Waveguide Body	Aluminum, grey painted	Waveguide	WRD250, FPWRD250 Flange
Connector Body	Passivated stainless steel	Coax Connector	N Female
Center Contact	Gold plated beryllium copper		
Operating Temp	-40°C to 70°C	Net Weight	About 358.5g



Right Angle Double Ridge Waveguide to Coax Adapter, RWRD250N
2.5-8GHz, WRD250 to N Female, FPWRD250 Flange

Typical Test Data

