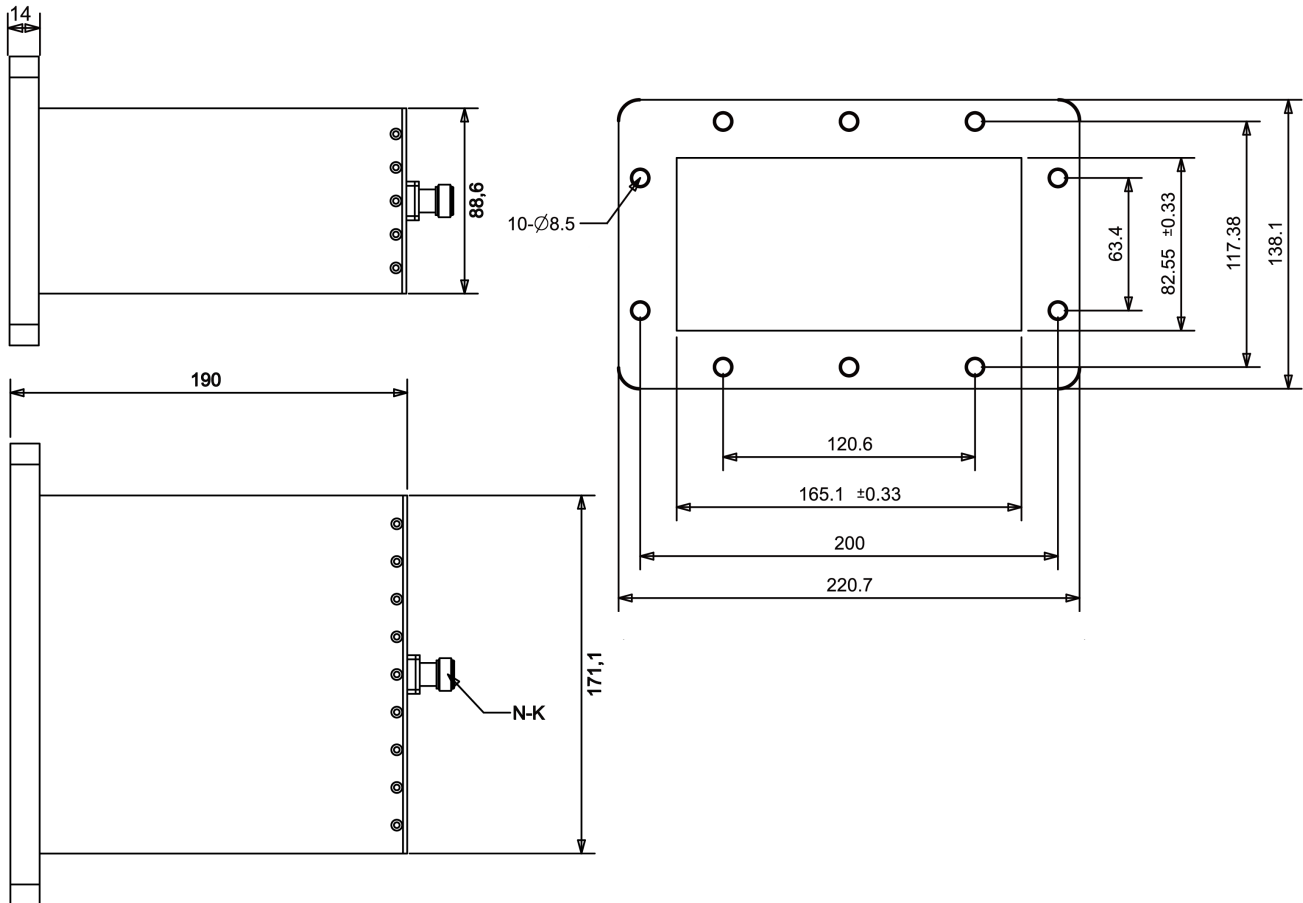


## End Launch Waveguide to Coaxial Adapter, RWR650NE WR650 to N Female, FDP14(UDR) Flange

Dimensions(mm) Tolerance $\pm 1\%$



### Electrical & Environmental

<b>Frequency Range</b>	1.13-1.73GHz	<b>Impedance</b>	50 ohm	<b>VSWR</b>	1.2 max
<b>Input Avg Power</b>	1000W @25°C	<b>Peak Power</b>	-	<b>Insertion Loss</b>	0.2 dB max

### Mechanical & Product Information

<b>Product Number</b>	RWR650NE, H-Grade	<b>Body Geometry</b>	End Launch
<b>Waveguide Body</b>	Aluminum, grey painted	<b>Waveguide</b>	WR650, FDP14(UDR) Flange
<b>Connector Body</b>	Passivated stainless steel	<b>Coax Connector</b>	N Female
<b>Center Contact</b>	Gold plated beryllium copper		
<b>Operating Temp</b>	-40°C to 70°C	<b>Net Weight</b>	-