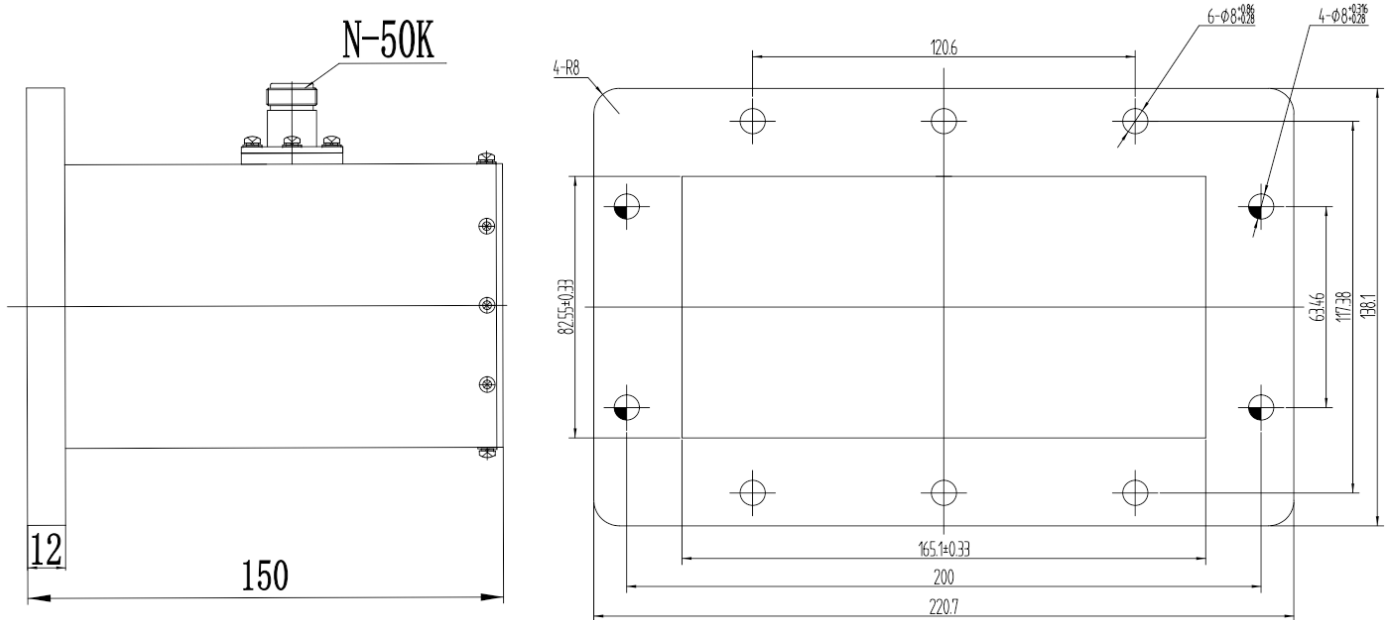


Right Angle Waveguide to Coaxial Adapter, RWR650N100 1.13-1.73GHz, WR650 to N Female, UDR14 Flange

Dimensions(mm) Tolerance $\pm 1\%$

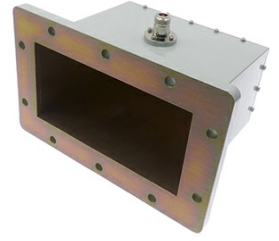


Electrical & Environmental

Frequency Range	1.13-1.73GHz	Impedance	50 ohm	VSWR	1.2 max
Input Avg Power	100W @25°C	Peak Power	-	Insertion Loss	0.15 dB max

Mechanical & Product Information

Product Number	RWR650N100, E-Grade	Body Geometry	Right Angle
Waveguide Body	Aluminum, grey painted	Waveguide	WR650, UDR14 Flange
Connector Body	Nickel plated brass	Coax Connector	N Female
Center Contact	Gold plated beryllium copper		
Operating Temp	-40°C to 70°C	Net Weight	About 1.6kg



Right Angle Waveguide to Coaxial Adapter, RWR650N100
1.13-1.73GHz, WR650 to N Female, UDR14 Flange

Typical Test Data

