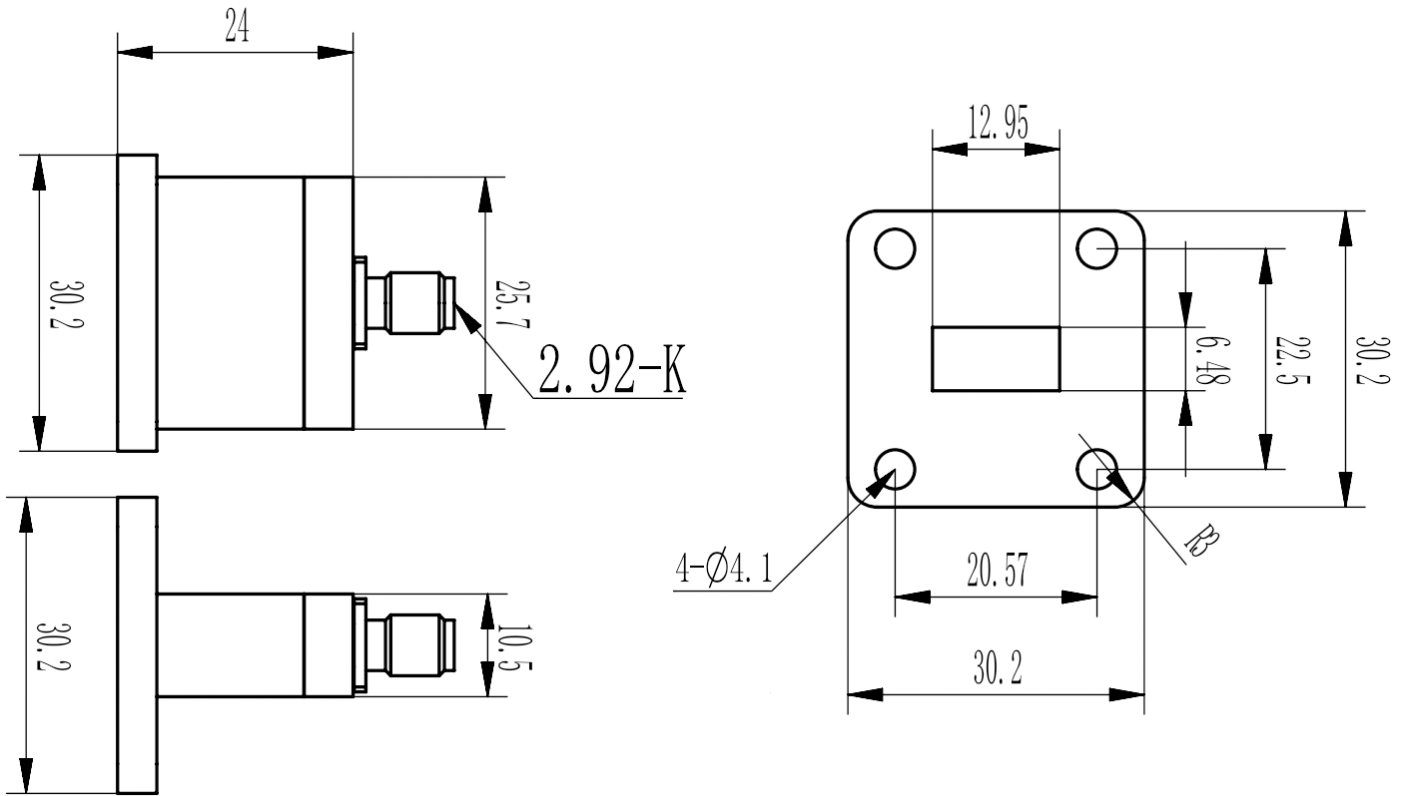




End Launch Waveguide to Coaxial Adapter, RWR51KE WR51 to 2.92mm Female, FBP180(UBR) Flange

Dimensions(mm) Tolerance $\pm 1\%$

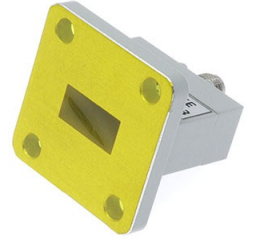


Electrical & Environmental

Frequency Range	14.5-22GHz	Impedance	50 ohm	VSWR	1.2 max
Input Avg Power	10W @25°C	Peak Power	3000W	Insertion Loss	0.35 dB max

Mechanical & Product Information

Product Number	RWR51KE, H-Grade	Body Geometry	End Launch
Waveguide Body	Copper, grey painted	Waveguide	WR51, FBP180(UBR) Flange
Connector Body	Passivated stainless steel	Coax Connector	2.92mm Female
Center Contact	Gold plated beryllium copper		
Operating Temp	-40°C to 70°C	Net Weight	About 21.5g



End Launch Waveguide to Coaxial Adapter, RWR51KE
WR51 to 2.92mm Female, FBP180(UBR) Flange

Typical Test Data

