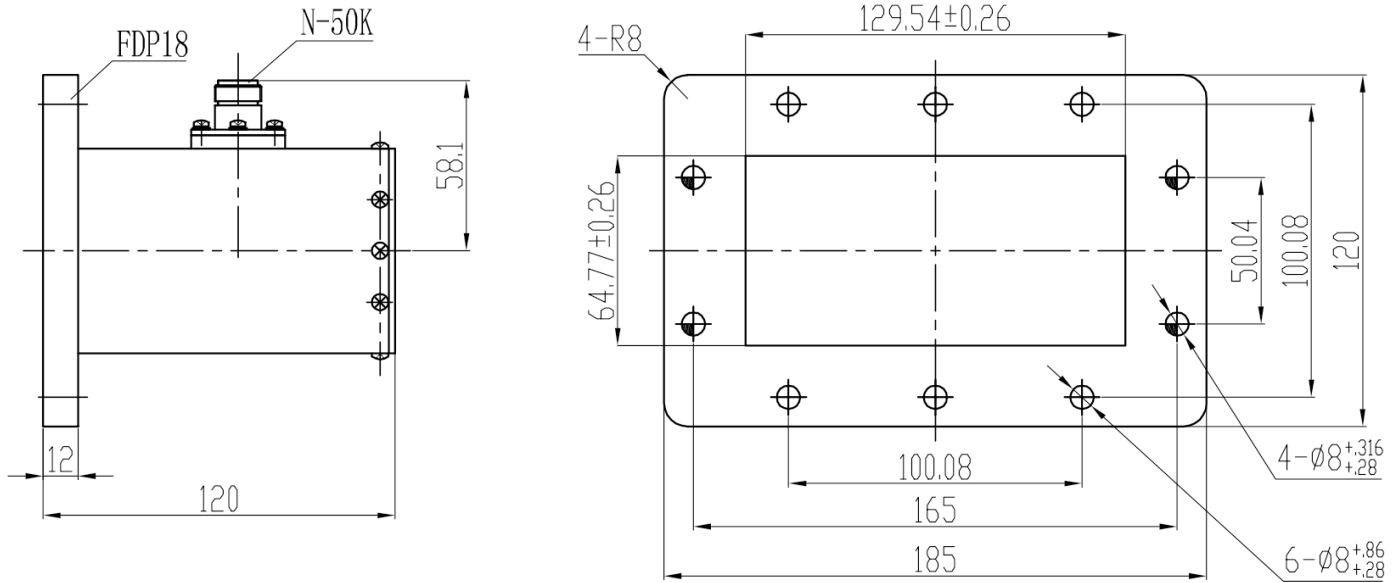


Right Angle Waveguide to Coaxial Adapter, RWR510N100 1.45-2.2GHz, WR510 to N Female, UDR18 Flange

Dimensions(mm) Tolerance±1%

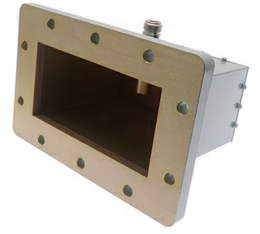


Electrical & Environmental

Frequency Range	1.45-2.2GHz	Impedance	50 ohm	VSWR	1.2 max
Input Avg Power	100W @25°C	Peak Power	-	Insertion Loss	0.2 dB max

Mechanical & Product Information

Product Number	RWR510N100, E-Grade	Body Geometry	Right Angle
Waveguide Body	Aluminum, grey painted	Waveguide	WR510, UDR18 Flange
Connector Body	Nickel plated brass	Coax Connector	N Female
Center Contact	Gold plated beryllium copper		
Operating Temp	-40°C to 70°C	Net Weight	About 915.0g



Right Angle Waveguide to Coaxial Adapter, RWR510N100
1.45-2.2GHz, WR510 to N Female, UDR18 Flange

Typical Test Data

