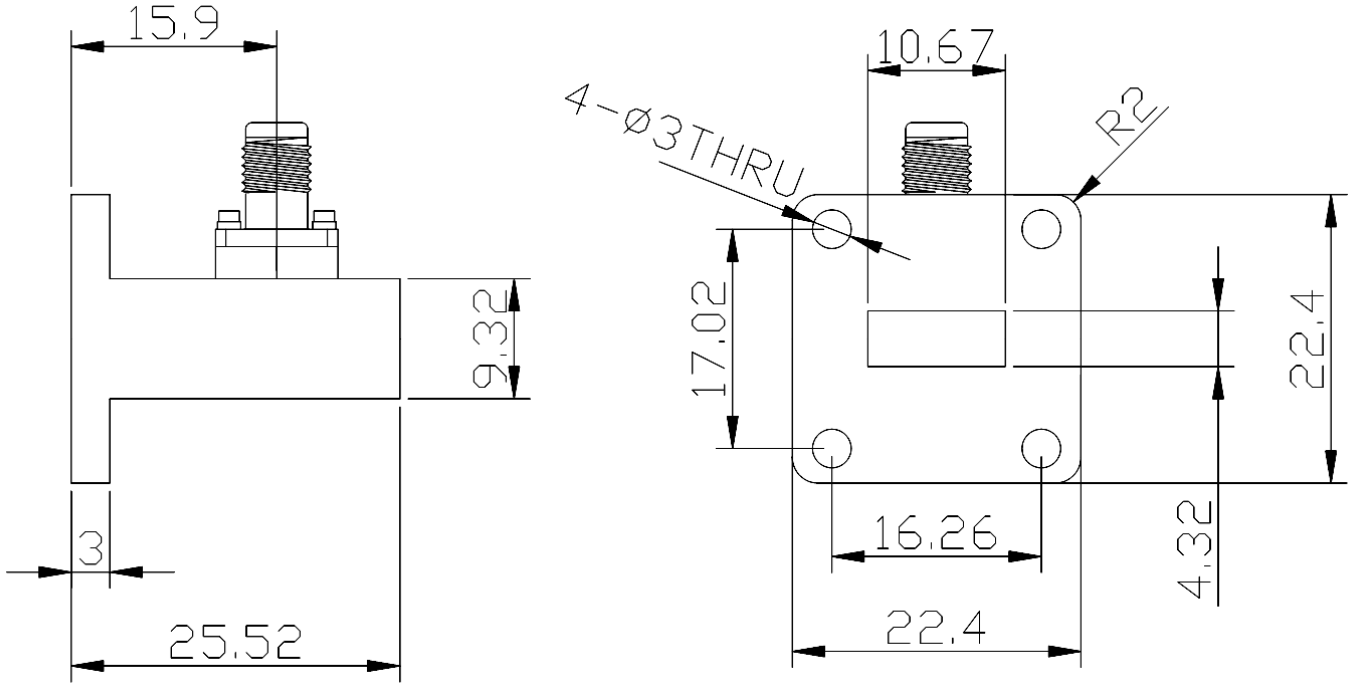




**Right Angle Waveguide to Coaxial Adapter, RWR42K-GBA**  
**18-26.5GHz, WR42 to 2.92mm Female, UBR220 Flange**

**Dimensions(mm) Tolerance±1%**



**Electrical & Environmental**

Frequency Range	18-26.5GHz	Impedance	50 ohm	VSWR	1.2 max
Input Avg Power	10W @25°C	Peak Power	3000W	Insertion Loss	0.25 dB max

**Mechanical & Product Information**

Product Number	RWR42K-GBA	Body Geometry	Right Angle
Waveguide Body	Gold plated brass	Waveguide	WR42, UBR220 Flange
Connector Body	Passivated stainless steel	Coax Connector	2.92mm(K,SK) Female
Center Contact	Gold plated beryllium copper		
Operating Temp	-30°C to 70°C	Net Weight	-



**Right Angle Waveguide to Coaxial Adapter, RWR42K-GBA**  
**18-26.5GHz, WR42 to 2.92mm(K,SK) Female, UBR220 Flange**

**Typical Test Data**

