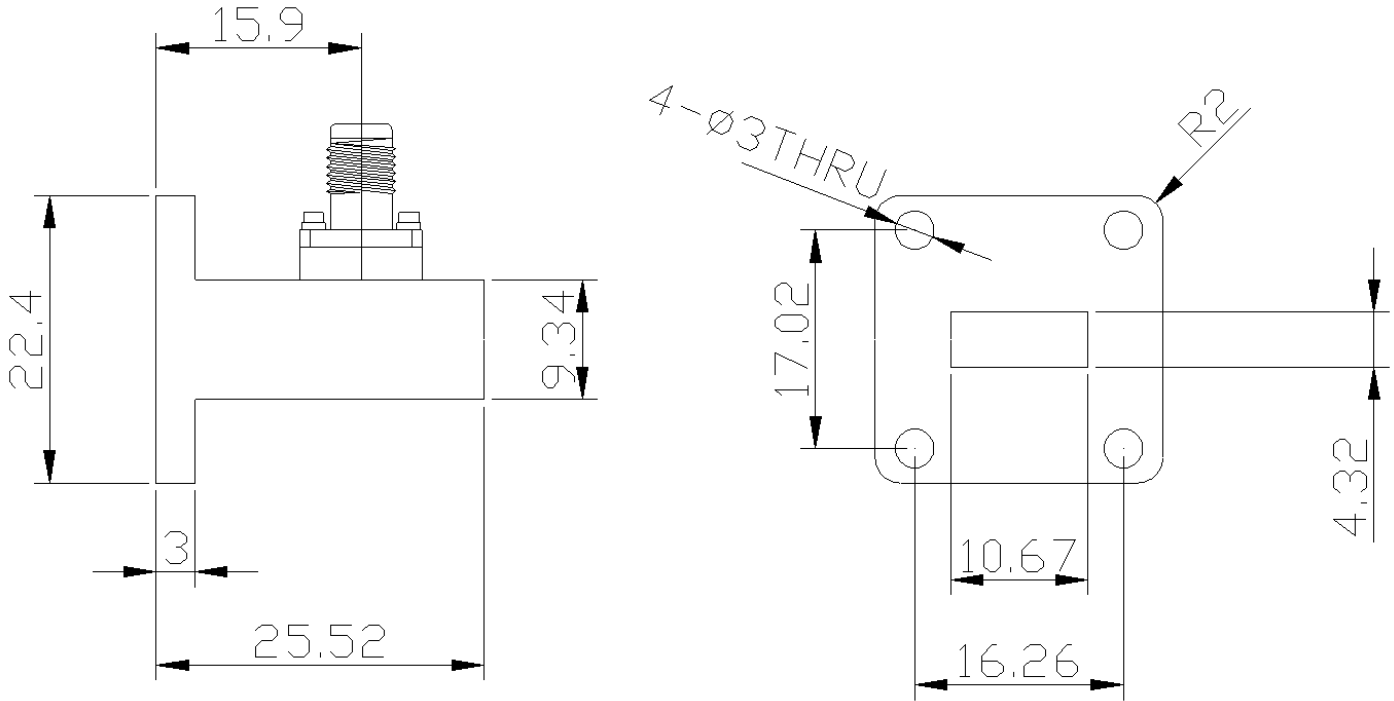


Right Angle Waveguide to Coaxial Adapter, RWR42K-2 WR42 to 2.92mm Female, FBP220(UBR) Flange

Dimensions(mm) Tolerance $\pm 1\%$

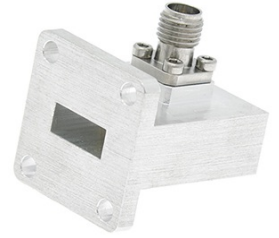


Electrical & Environmental

Frequency Range	17.6-26.7GHz	Impedance	50 ohm	VSWR	1.2 max
Input Avg Power	10W @25°C	Peak Power	3000W	Insertion Loss	0.25 dB max

Mechanical & Product Information

Product Number	RWR42K-2, E-Grade	Body Geometry	Right Angle
Waveguide Body	Aluminum	Waveguide	WR42, FBP220(UBR) Flange
Connector Body	Passivated stainless steel	Coax Connector	2.92mm Female
Center Contact	Gold plated beryllium copper		
Operating Temp	-55°C to 85°C	Net Weight	About 18.0g



Right Angle Waveguide to Coaxial Adapter, RWR42K-2 WR42 to 2.92mm Female, FBP220(UBR) Flange

Typical Test Data

