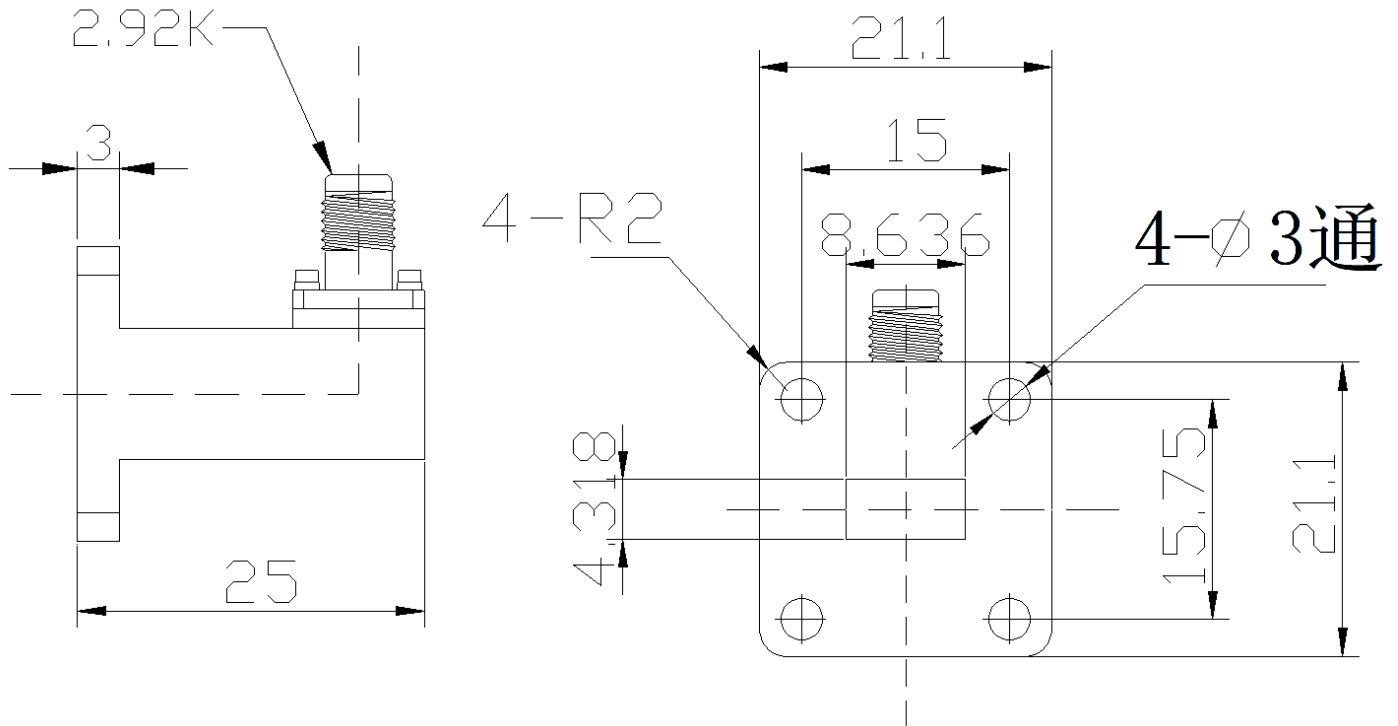


Right Angle Waveguide to Coaxial Adapter, RWR34K02 21.7-33GHz, WR34 to 2.92mm Female, UBR260 Flange

Dimensions(mm) Tolerance $\pm 1\%$

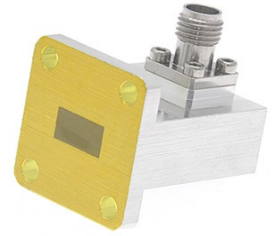


Electrical & Environmental

Frequency Range	21.7-33GHz	Impedance	50 ohm	VSWR	1.25 max
Input Avg Power	10W @25°C	Peak Power	1000W	Insertion Loss	0.3 dB max

Mechanical & Product Information

Product Number	RWR34K02, E-Grade	Body Geometry	Right Angle
Waveguide Body	Aluminum	Waveguide	WR34, UBR260 Flange
Connector Body	Passivated stainless steel	Coax Connector	2.92mm(K,SK) Female
Center Contact	Gold plated beryllium copper		
Operating Temp	-30°C to 70°C	Net Weight	About 15.6g



Right Angle Waveguide to Coaxial Adapter, RWR34K02
21.7-33GHz, WR34 to 2.92mm(K,SK) Female, UBR260 Flange

Typical Test Data

