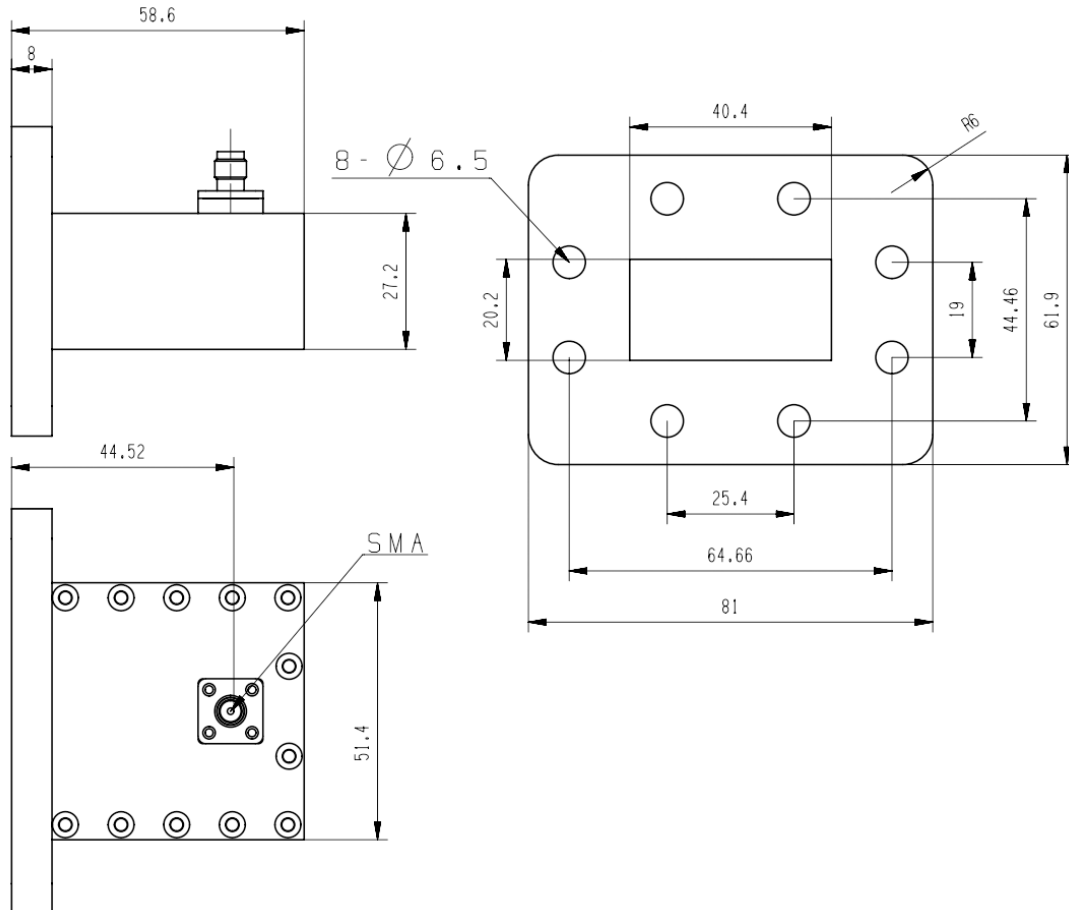




## Right Angle Waveguide to Coaxial Adapter, **RWR159S** 4.64-7.05GHz, WR159 to SMA Female, UDR58 Flange

### Dimensions(mm) Tolerance $\pm 1\%$



### Electrical & Environmental

Frequency Range	4.64-7.05GHz	Impedance	50 ohm	VSWR	1.2 max
Input Avg Power	100W @25°C	Peak Power	2000W	Insertion Loss	0.3 dB max

### Mechanical & Product Information

Product Number	RWR159S, H-Grade	Body Geometry	Right Angle
Waveguide Body	Aluminum, grey painted	Waveguide	WR159, UDR58 Flange
Connector Body	Passivated stainless steel	Coax Connector	SMA Female
Center Contact	Gold plated beryllium copper		
Operating Temp	-40°C to 70°C	Net Weight	About 188.3g



**Right Angle Waveguide to Coaxial Adapter, RWR159S**  
4.64-7.05GHz, WR159 to SMA Female, UDR58 Flange

**Typical Test Data**

