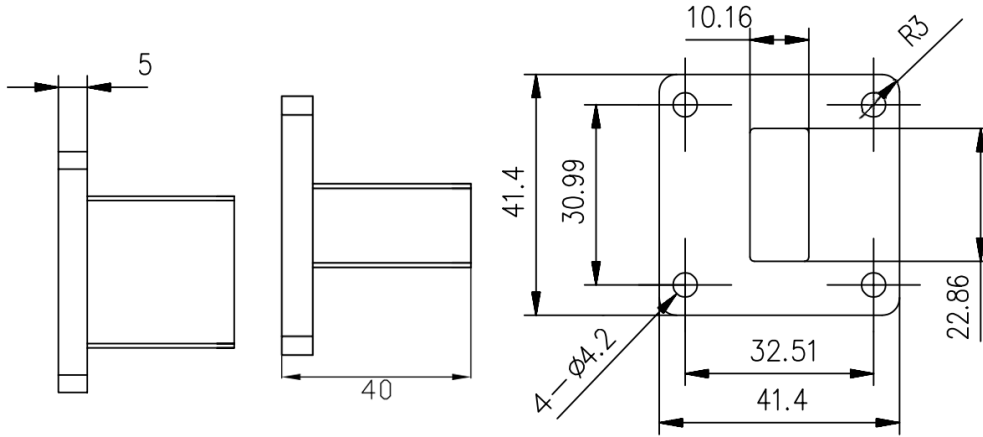




WR90(BJ100) Small Size Waveguide Termination, RWT9020 8.2-12.5GHz, 20W, FBP100(UBR) Flange, Rectangular

Dimensions(mm) Tolerance $\pm 1\%$



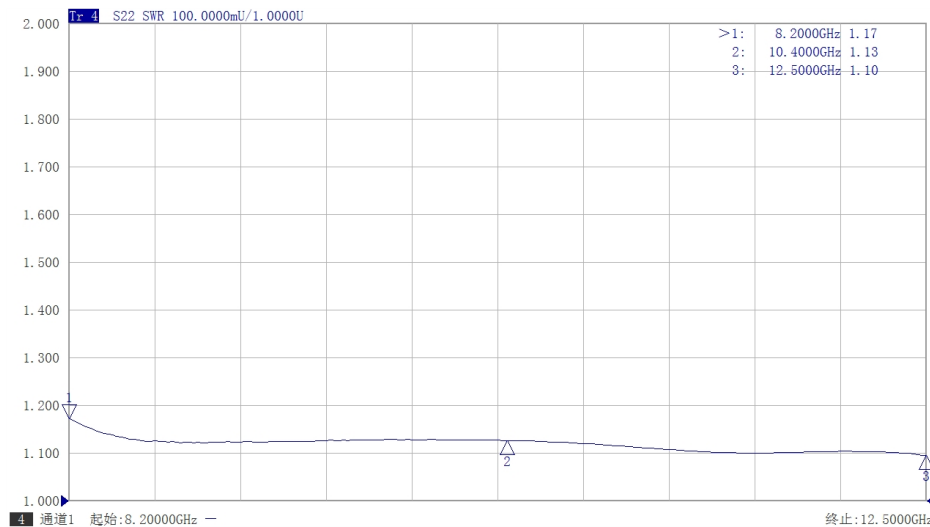
Electrical & Environmental

Frequency Range	8.2-12.5GHz	Impedance	50 ohm	VSWR	1.2 max
Input Avg Power	20W @25°C	Peak Power	-		

Mechanical & Product Information

Product Number	RWT9020, Professional	Waveguide/Flange	WR90(BJ100), FBP100(UBR) Flange
Waveguide Body	Aluminum, grey painted	Heat Sink	N/A
Waveguide Cavity	Aluminum, electric conductive oxidation		
Operating Temp		Net Weight	About 36.0g

Typical Test Data



Notes

1. Customized outlines and optimal VSWR available.
2. Refer to the derating curve for power input, derate linearly to 2W at 100°C.
3. To maintain best performance, recommended to use fan to keep the case temp under 85°C.

