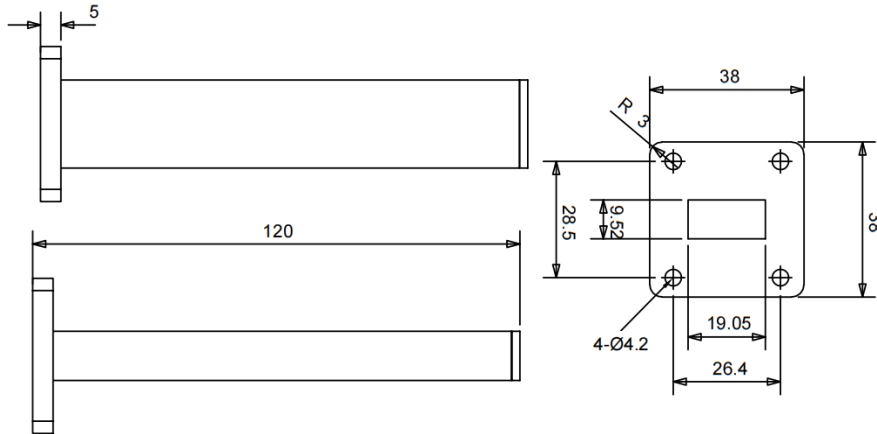




WR75(BJ120) Waveguide Matched Termination, RWT75 9.84-15GHz, 2W, FBP120(UBR) Flange, Rectangular

Dimensions(mm) Tolerance±1%



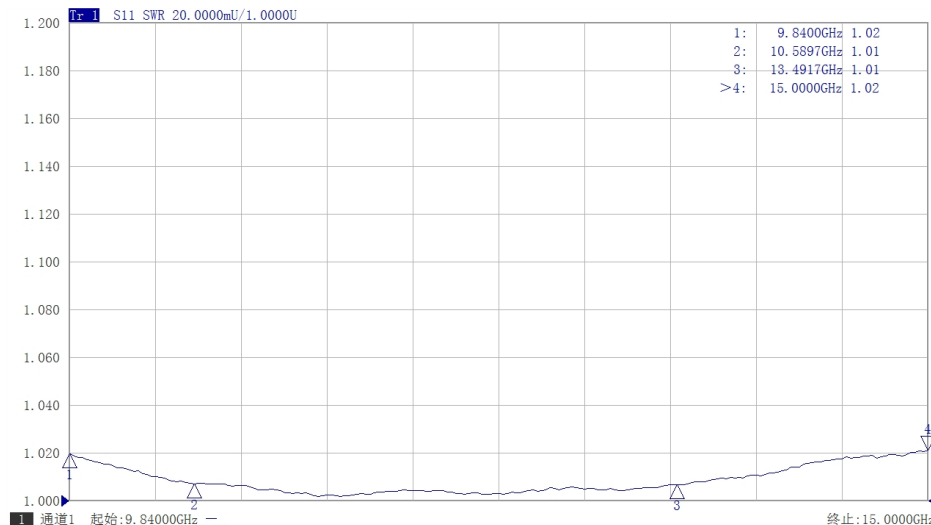
Electrical & Environmental

Frequency Range	9.84-15GHz	Impedance	50 ohm	VSWR	1.03 max
Input Avg Power	2W @25°C	Peak Power	-		

Mechanical & Product Information

Product Number	RWT75, High-Precision	Waveguide/Flange	WR75(BJ120), FBP120(UBR) Flange
Waveguide Body	Aluminum, grey painted	Heat Sink	N/A
Waveguide Cavity	Aluminum, electric conductive oxidation		
Operating Temp		Net Weight	About 62.0g

Typical Test Data



Notes

1. Customized outlines and optimal VSWR available.
2. Refer to the derating curve for power input, derate linearly to 0.2W at 100°C.

