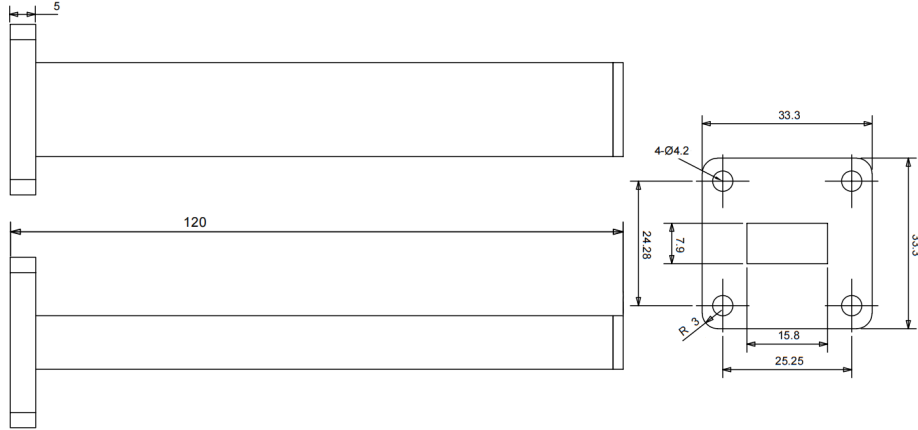




## WR62(BJ140) Waveguide Matched Termination, RWT62 11.9-18GHz, 1.5W, FBP140(UBR) Flange, Rectangular

### Dimensions(mm) Tolerance $\pm 1\%$



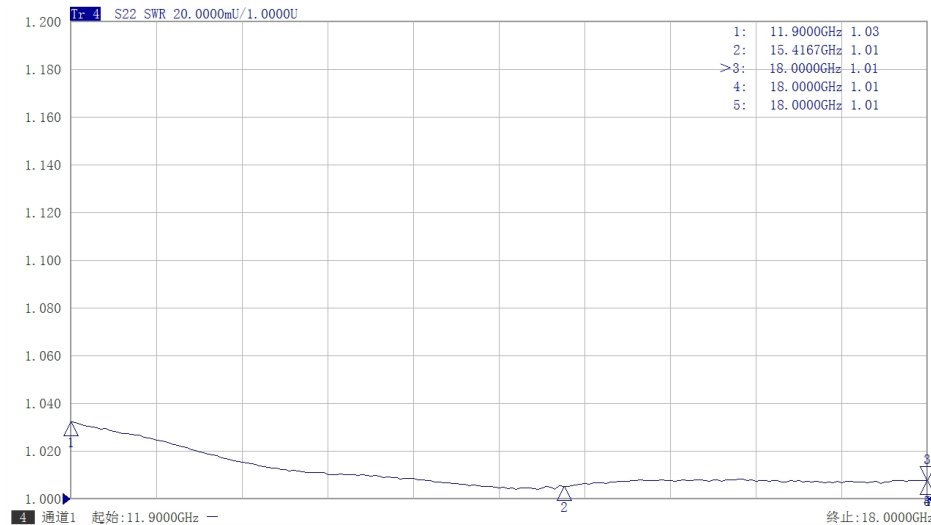
### Electrical & Environmental

Frequency Range	11.9-18GHz	Impedance	50 ohm	VSWR	1.03 max
Input Avg Power	1.5W @25°C	Peak Power	-		

### Mechanical & Product Information

Product Number	RWT62, High-Precision	Waveguide/Flange	WR62(BJ140), FBP140(UBR) Flange
Waveguide Body	Aluminum, grey painted	Heat Sink	N/A
Waveguide Cavity	Aluminum, electric conductive oxidation		
Operating Temp		Net Weight	About 39.2g

### Typical Test Data



### Notes

1. Customized outlines and optimal VSWR available.
2. Refer to the derating curve for power input, derate linearly to 0.2W at 100°C.

