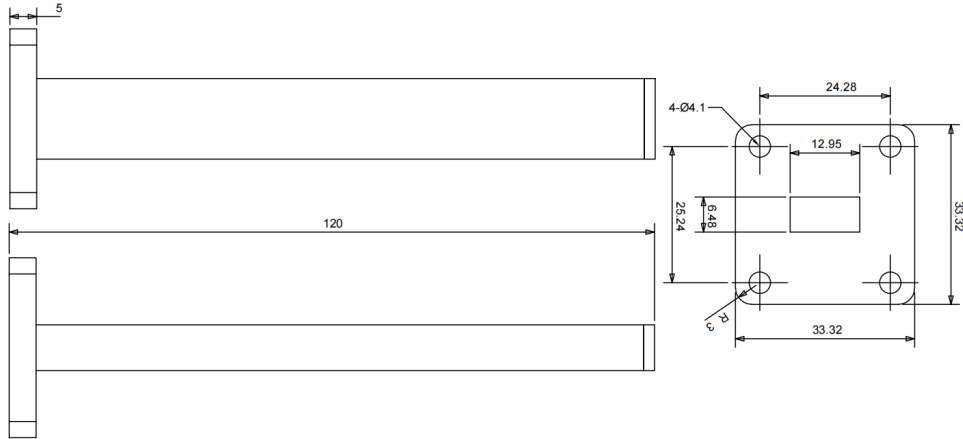




WR51(BJ180) Waveguide Matched Termination, RWT51 14.5-22GHz, 1W, FBP180(UBR) Flange, Rectangular

Dimensions(mm) Tolerance±1%



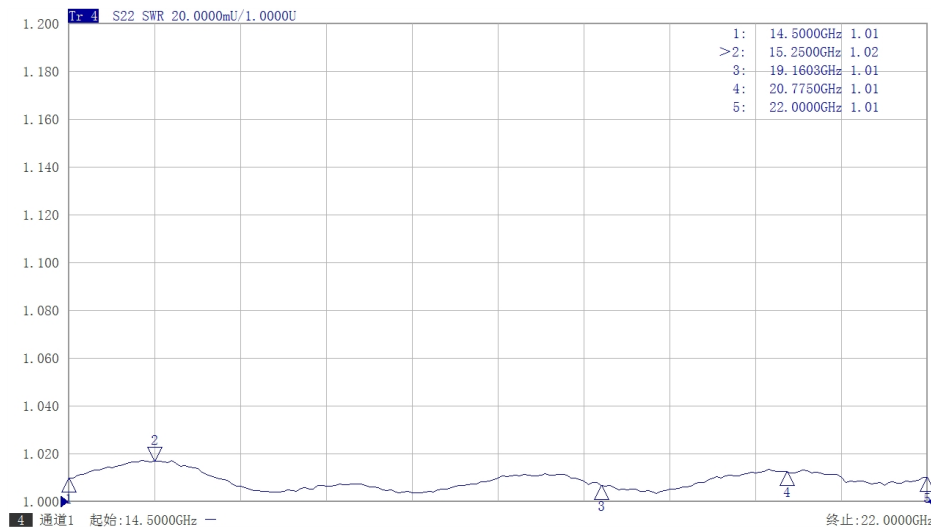
Electrical & Environmental

Frequency Range	14.5-22GHz	Impedance	50 ohm	VSWR	1.03 max
Input Avg Power	1W @25°C	Peak Power	-		

Mechanical & Product Information

Product Number	RWT51, High-Precision	Waveguide/Flange	WR51(BJ180), FBP180(UBR) Flange
Waveguide Body	Copper, grey painted	Heat Sink	N/A
Waveguide Cavity	Copper, electric conductive oxidation		
Operating Temp		Net Weight	About 86.0g

Typical Test Data



Notes

1. Customized outlines and optimal VSWR available.
2. Refer to the derating curve for power input, derate linearly to 0.1W at 100°C.

