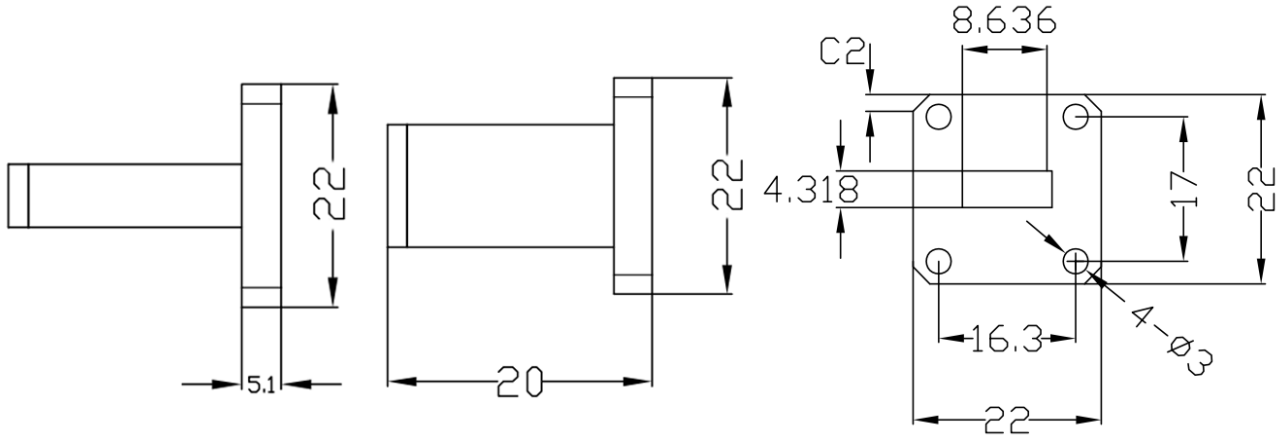


WR34(BJ260) Small Size Waveguide Termination, RWT3415U 21.7-33GHz, 15W, , Rectangular

Dimensions(mm) Tolerance $\pm 1\%$



Electrical & Environmental

Frequency Range	21.7-33GHz	Impedance	50 ohm	VSWR	1.2 max
Input Avg Power	15W @25°C	Peak Power	-		

Mechanical & Product Information

Product Number	RWT3415U, Professional	Waveguide/Flange	WR34(BJ260),
Waveguide Body	Copper, grey painted	Heat Sink	N/A
Waveguide Cavity	Copper, electric conductive oxidation		
Operating Temp		Net Weight	-

Typical Test Data

Notes

1. Customized outlines and optimal VSWR available.
2. Refer to the derating curve for power input, derate linearly to 2W at 100°C.
3. To maintain best performance, recommended to use fan to keep the case temp under 85°C.

