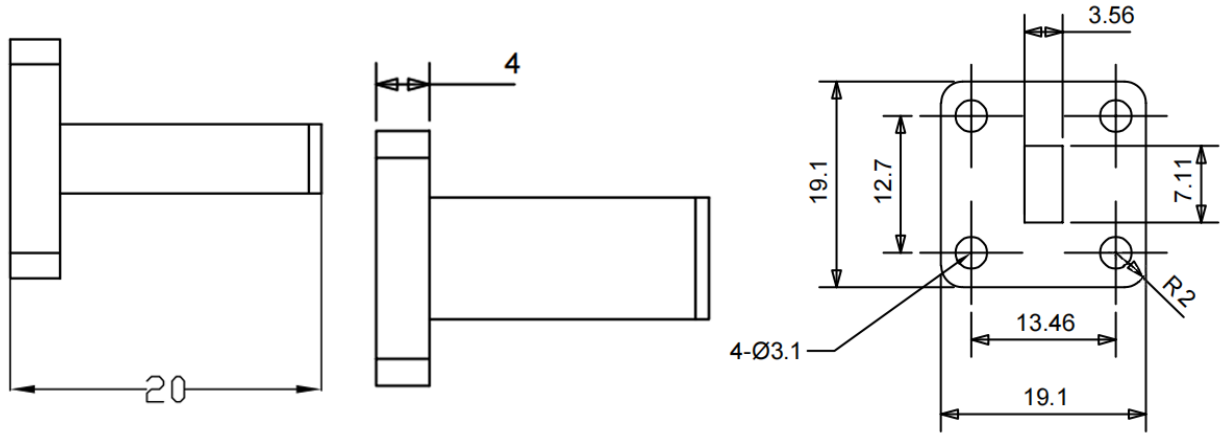




## WR28(BJ320) Small Size Waveguide Termination, RWT2815 26.3-40GHz, 15W, FBP320(UBR) Flange, Rectangular

Dimensions(mm) Tolerance $\pm 1\%$



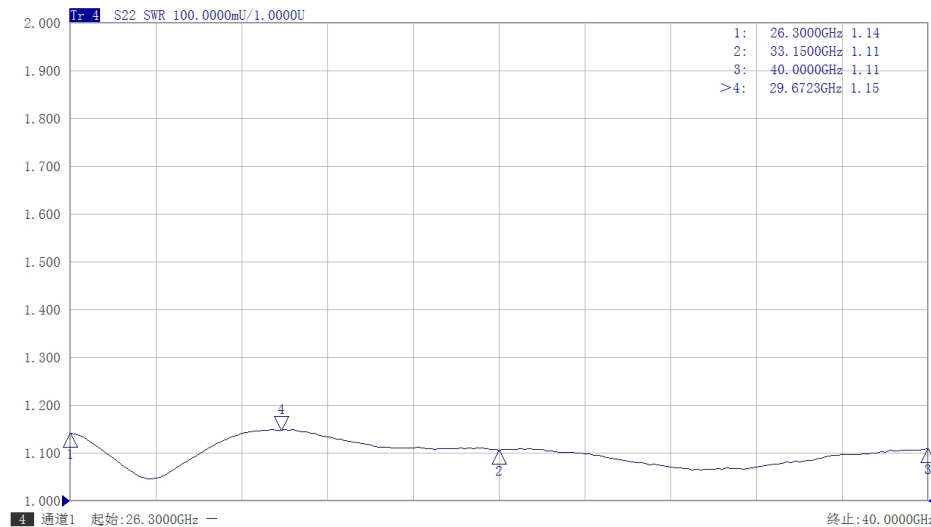
### Electrical & Environmental

<b>Frequency Range</b>	26.3-40GHz	<b>Impedance</b>	50 ohm	<b>VSWR</b>	1.2 max
<b>Input Avg Power</b>	15W @25°C	<b>Peak Power</b>	-		

### Mechanical & Product Information

<b>Product Number</b>	RWT2815, Professional	<b>Waveguide/Flange</b>	WR28(BJ320), FBP320(UBR) Flange
<b>Waveguide Body</b>	Copper, grey painted	<b>Heat Sink</b>	N/A
<b>Waveguide Cavity</b>	Copper, electric conductive oxidation		
<b>Operating Temp</b>		<b>Net Weight</b>	About 15.0g

### Typical Test Data



### Notes

1. Customized outlines and optimal VSWR available.
2. Refer to the derating curve for power input, derate linearly to 2W at 100°C.
3. To maintain best performance, recommended to use fan to keep the case temp under 85°C.

