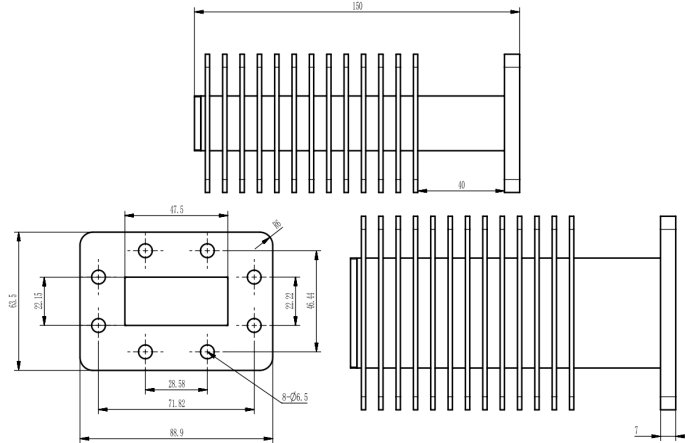




**WR187(BJ48) Waveguide Termination, RWT187300**  
**3.94-5.99GHz, 300W, FDP48(UDR) Flange, Rectangular**

**Dimensions(mm) Tolerance±1%**



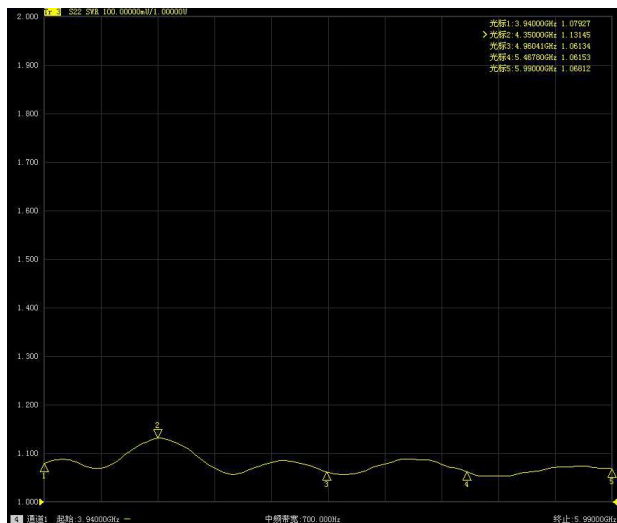
**Electrical & Environmental**

<b>Frequency Range</b>	3.94-5.99GHz	<b>Impedance</b>	50 ohm	<b>VSWR</b>	1.2 max
<b>Input Avg Power</b>	300W @25°C	<b>Peak Power</b>	-		

**Mechanical & Product Information**

<b>Product Number</b>	RWT187300, P-Grade	<b>Waveguide</b>	WR187(BJ48), FDP48(UDR) Flange
<b>Waveguide Body</b>	Aluminum, black painted	<b>Heat Sink</b>	Black anodized aluminum
<b>Waveguide Cavity</b>	Aluminum, electric conductive oxidation		
<b>Operating Temp</b>	-55°C~+100°C	<b>Net Weight</b>	About 618.5g

**Typical Test Data**



**Notes**

1. Customized outlines and optimal VSWR available.
2. Refer to the derating curve for power input, derate linearly to 30W at 100°C.
3. To maintain best performance, recommended to use fan to keep the case temp under 85°C.

