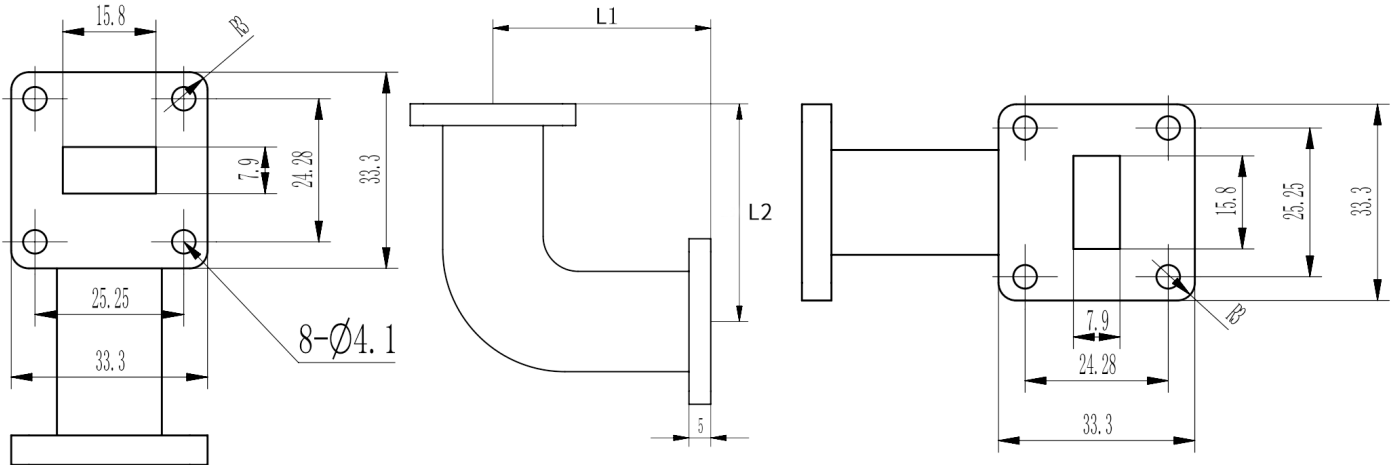




## WR62(R140) Radius Right Angle Bent Waveguide, RWGWE62-L1-L2 11.9-18GHz, UBR140 Flange, E-Bend

### Dimensions(mm) Tolerance±1%



### Electrical & Environmental

Frequency Range	11.9-18GHz
VSWR	1.15 Max
Temperature Range	-55°C~+85°C

Product Selection, Customizable			
RFTOP P/N	L1(mm)	L2(mm)	IL(dB)
RWGWE62-50-50	50	50	≤0.10

### Mechanical & Product Information

Product Number	RWGWE62-L1-L2
Product Type	Bent Waveguide
Waveguide 1	WR62(R140), UBR140 Flange
Waveguide 2	WR62(R140), UBR140 Flange
Waveguide Body	Aluminum, grey painted
Center Contact	Aluminum, pickling

#### Notes

1. Customized services include: length and structure and flange type.
2. The marked loss is the theoretical estimated loss, for reference only, the specific product after processing test shall prevail.
3. Please refer to the second page of the specification of typical electrical performance measured curve.



**WR62(R140) Radius Right Angle Bent Waveguide, RWGWE62-L1-L2**  
**11.9-18GHz, UBR140 Flange, E-Bend**

**Typical Test Data**

