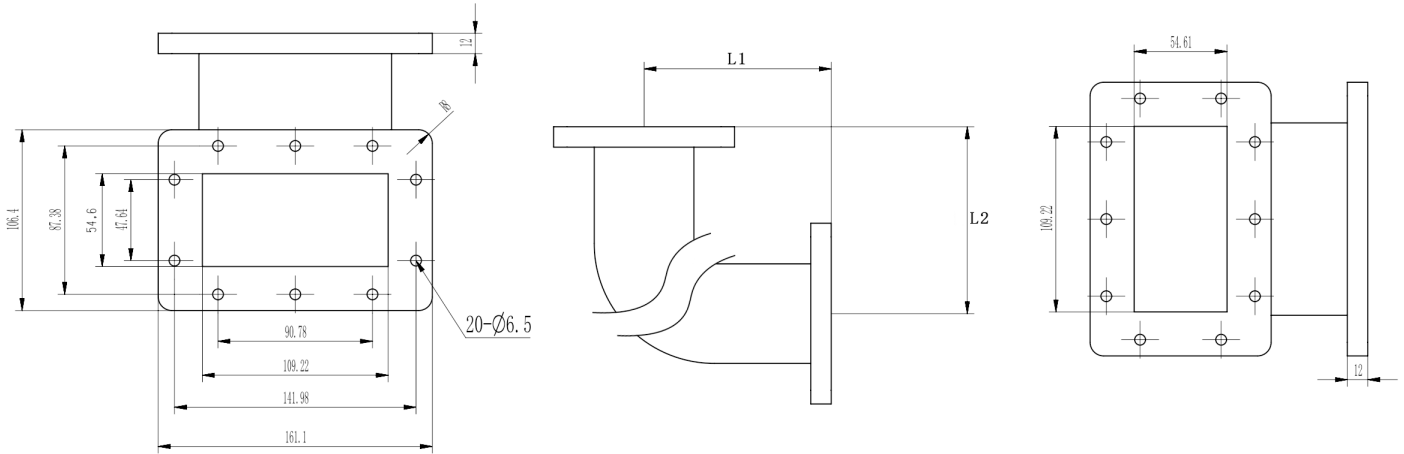


## WR430(R22) Radius Right Angle Bent Waveguide, RWGWE430-L1-L2 1.72-2.61GHz, UDR22 Flange, E-Bend

### Dimensions(mm) Tolerance±1%



### Electrical & Environmental

Frequency Range	1.72-2.61GHz
VSWR	1.15 Max
Temperature Range	-40°C~+70°C

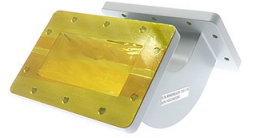
Product Selection, Customizable			
RFTOP P/N	L1(mm)	L2(mm)	IL(dB)
RWGWE430-110-110	110	110	≤0.10
RWGWE430-200-200	200	200	≤0.15

### Mechanical & Product Information

Product Number	RWGWE430-L1-L2
Product Type	Bent Waveguide
Waveguide 1	WR430(R22), UDR22 Flange
Waveguide 2	WR430(R22), UDR22 Flange
Waveguide Body	Aluminum, grey painted
Center Contact	Aluminum, electric conductive oxidation

#### Notes

1. Customized services include: length and structure and flange type.
2. The marked loss is the theoretical estimated loss, for reference only, the specific product after processing test shall prevail.
3. Please refer to the second page of the specification of typical electrical performance measured curve.



**WR430(R22) Radius Right Angle Bent Waveguide, RWGWE430-L1-L2**  
**1.72-2.61GHz, UDR22 Flange, E-Bend**

**Typical Test Data**

110 × 110mm

