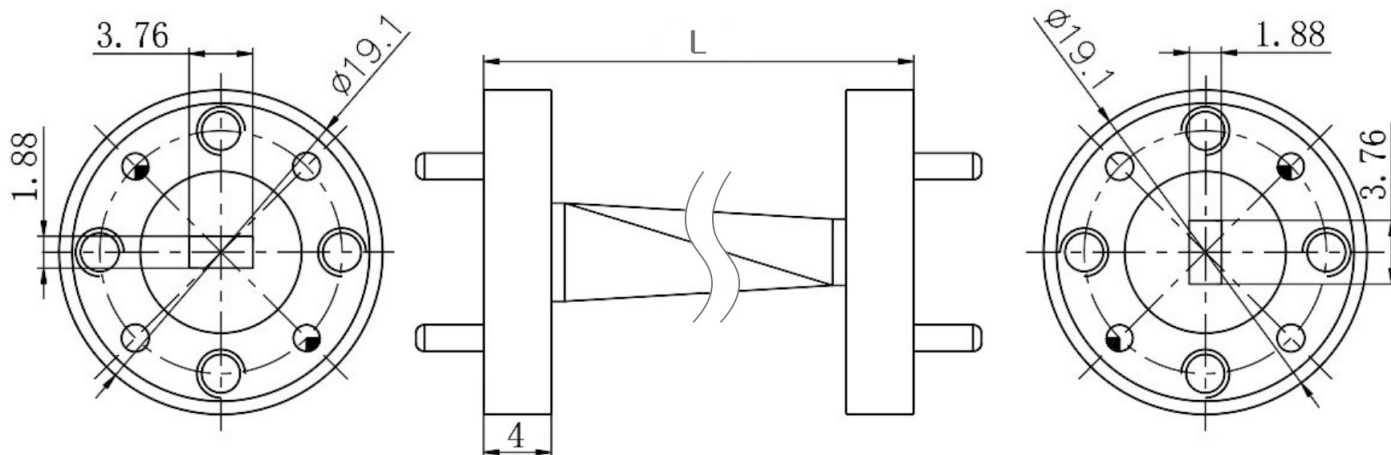




## WR15(R620) Twisted Waveguide, RWGT15-L 49.8-75.8GHz, FUGP620 Flange

### Dimensions(mm) Tolerance $\pm 1\%$



### Electrical & Environmental

Frequency Range	49.8-75.8GHz
VSWR	1.2 Max

Product Selection, Customizable		
RFTOP P/N	L(mm)	IL(dB)
RWGT15-25	25.4	0.17

### Mechanical & Product Information

Product Number	RWGT15-L
Product Type	Twisted Waveguide
Waveguide 1	WR15(R620), FUGP620 Flange
Waveguide 2	WR15(R620), FUGP620 Flange
Waveguide Body	Copper, gold plated
Center Contact	Copper, gold plated

#### Notes

1. Customized services include: length and structure and flange type.
2. The marked loss is the theoretical estimated loss, for reference only, the specific product after processing test shall prevail.
3. Please refer to the second page of the specification of typical electrical performance measured curve.