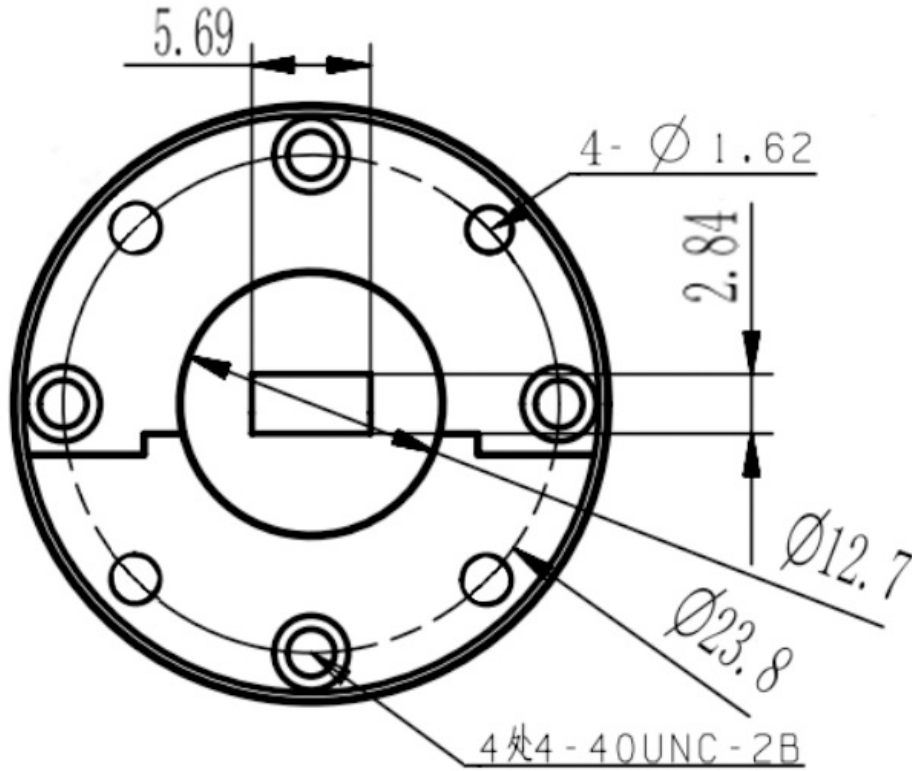


WR22(BJ400) 1/4 Line, RWGQL22
32.9-50.1GHz, FUGP400 Circular Flange

Dimensions(mm) Tolerance $\pm 1\%$



Electrical & Environmental

Frequency Range	32.9-50.1GHz
Temperature Range	-40°C to 70°C

Mechanical & Product Information

Product Number	RWGQL22
Product Type	1/4 Line
Waveguide 1	WR22(BJ400), FUGP400 Circular Flange
Waveguide 2	WR22(BJ400), FUGP400 Circular Flange
Waveguide Body	Copper, gold plated
Center Contact	Copper, gold plated