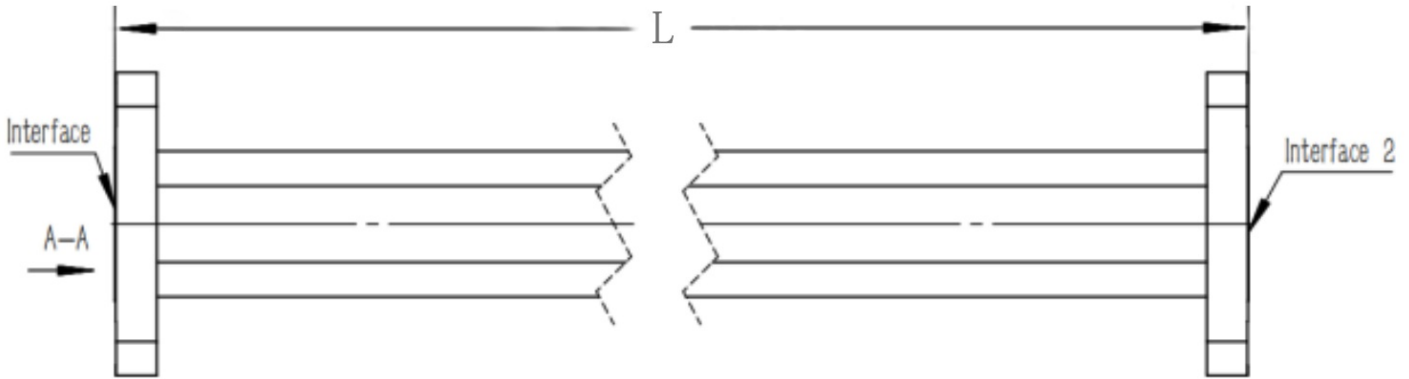


WR90(R100) Flexible Waveguide, RWGFT90D-L 8.2-12.5GHz, 960W, UDR100 Flange, Twistable

Dimensions(mm) Tolerance $\pm 1\%$



Electrical & Environmental

Frequency Range	8.2-12.5GHz
VSWR	1.13 Max
Input Avg Power	960W @25°C
Min Bend Radius	64mm/E 127mm/H
Repeated Bend Radius	264mm/E 528mm/H
Max. Torsion Angle	310°/m
Operating Pressure	45psig Max
Temperature Range	-40°C~+75°C

Product Selection, Customizable

RFTOP P/N	L(mm)	L2(mm)	IL(dB)
-----------	-------	--------	--------

Notes

1. Customized services include: length and structure and flange type.
2. The marked loss is the theoretical estimated loss, for reference only, the specific product after processing test shall prevail.
3. Please refer to the second page of the specification of typical electrical performance measured curve.

Mechanical & Product Information

Product Number	RWGFT90D-L
Product Type	Flexible Waveguide
Waveguide 1	WR90(R100), UDR100 Flange
Waveguide 2	WR90(R100), UDR100 Flange
Waveguide Body	Brass
Center Contact	Brass, silver plating