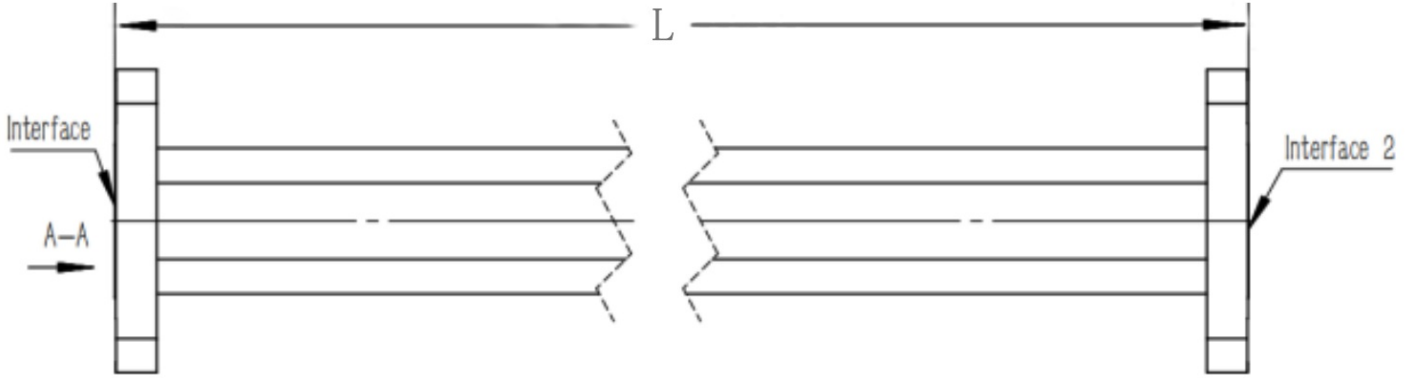


## WR90(R100) Flexible Waveguide, RWGFT90-L 8.2-12.5GHz, 960W, UBR100 Flange, Twistable

### Dimensions(mm) Tolerance $\pm 1\%$



### Electrical & Environmental

Frequency Range	8.2-12.5GHz
VSWR	1.1 Max
Input Avg Power	960W @25°C
Min Bend Radius	64mm/E 127mm/H
Repeated Bend Radius	264mm/E 528mm/H
Max. Torsion Angle	310°/m
Operating Pressure	45psig Max
Temperature Range	-40°C~+75°C

Product Selection, Customizable		
RFTOP P/N	L(mm)	IL(dB)
RWGFT90-110	110	$\leq 0.13$
RWGFT90-600	600	$\leq 0.26$
RWGFT90-900	900	$\leq 0.39$
RWGFT90-1.2M	1200	$\leq 0.52$

#### Notes

1. Customized services include: length and structure and flange type.
2. The marked loss is the theoretical estimated loss, for reference only, the specific product after processing test shall prevail.
3. Please refer to the second page of the specification of typical electrical performance measured curve.

### Mechanical & Product Information

Product Number	RWGFT90-L
Product Type	Flexible Waveguide
Waveguide 1	WR90(R100), UBR100 Flange
Waveguide 2	WR90(R100), UBR100 Flange
Waveguide Body	Copper
Center Contact	Brass, silver plating