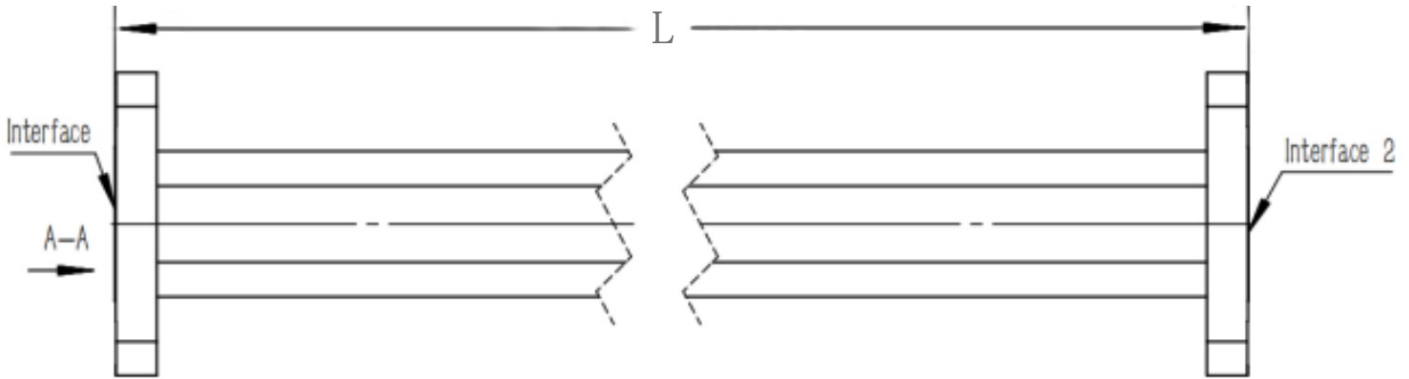


WR75(R120) Flexible Waveguide, RWGFT75B-L 9.84-15GHz, 750W, UBR120 Flange, Twistable

Dimensions(mm) Tolerance $\pm 1\%$



Electrical & Environmental

| | |
|----------------------|-----------------|
| Frequency Range | 9.84-15GHz |
| VSWR | 1.1 Max |
| Input Avg Power | 750W @25°C |
| Min Bend Radius | 64mm/E 115mm/H |
| Repeated Bend Radius | 216mm/E 432mm/H |
| Max. Torsion Angle | 360°/m |
| Operating Pressure | 45psig Max |
| Temperature Range | -40°C~+75°C |

| Product Selection, Customizable | | |
|---------------------------------|-------|-------------|
| RFTOP P/N | L(mm) | IL(dB) |
| RWGFT75B-900 | 900 | ≤ 0.53 |
| RWGFT75B-1.2M | 1200 | ≤ 0.71 |

Notes

1. Customized services include: length and structure and flange type.
2. The marked loss is the theoretical estimated loss, for reference only, the specific product after processing test shall prevail.
3. Please refer to the second page of the specification of typical electrical performance measured curve.

Mechanical & Product Information

| | |
|----------------|---------------------------|
| Product Number | RWGFT75B-L |
| Product Type | Flexible Waveguide |
| Waveguide 1 | WR75(R120), UBR120 Flange |
| Waveguide 2 | WR75(R120), UBR120 Flange |
| Waveguide Body | Brass |
| Center Contact | Brass, silver plating |