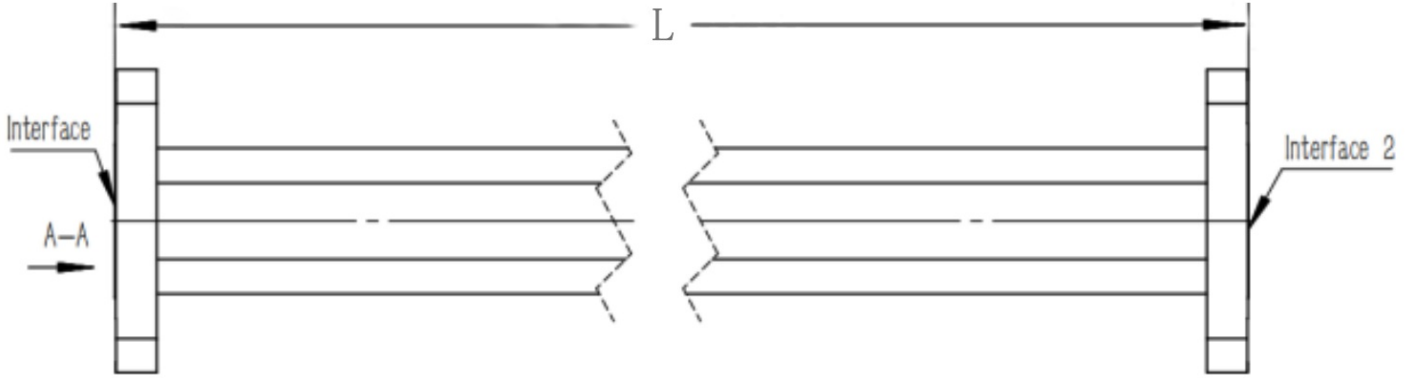


## WR62(R140) Flexible Waveguide, RWGFT62D-L 11.9-18GHz, 400W, UDR140 Flange, Twistable

### Dimensions(mm) Tolerance $\pm 1\%$



### Electrical & Environmental

Frequency Range	11.9-18GHz
VSWR	1.2 Max
Input Avg Power	400W @25°C
Min Bend Radius	52mm/E 102mm/H
Repeated Bend Radius	184mm/E 368mm/H
Max. Torsion Angle	445°/m
Operating Pressure	45psig Max
Temperature Range	-40°C~+75°C

### Product Selection, Customizable

RFTOP P/N	L(mm)	L2(mm)	IL(dB)
-----------	-------	--------	--------

#### Notes

1. Customized services include: length and structure and flange type.
2. The marked loss is the theoretical estimated loss, for reference only, the specific product after processing test shall prevail.
3. Please refer to the second page of the specification of typical electrical performance measured curve.

### Mechanical & Product Information

Product Number	RWGFT62D-L
Product Type	Flexible Waveguide
Waveguide 1	WR62(R140), UDR140 Flange
Waveguide 2	WR62(R140), UDR140 Flange
Waveguide Body	Brass
Center Contact	Brass, silver plating