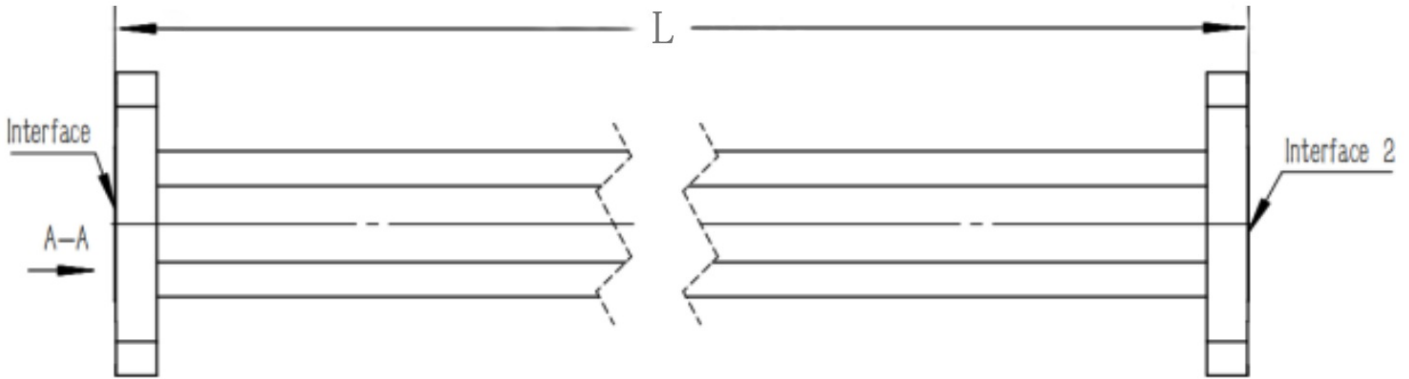


WR34(R260) Flexible Waveguide, RWGFT34-L 21.7-33GHz, 75W, UBR260 Flange, Twistable

Dimensions(mm) Tolerance $\pm 1\%$



Electrical & Environmental

Frequency Range	21.7-33GHz
VSWR	1.2 Max
Input Avg Power	75W @25°C
Min Bend Radius	38mm/E 76mm/H
Repeated Bend Radius	96mm/E 192mm/H
Max. Torsion Angle	510°/m
Operating Pressure	45psig Max
Temperature Range	-40°C~+75°C

Product Selection, Customizable

RFTOP P/N	L(mm)	L2(mm)	IL(dB)
-----------	-------	--------	--------

Notes

1. Customized services include: length and structure and flange type.
2. The marked loss is the theoretical estimated loss, for reference only, the specific product after processing test shall prevail.
3. Please refer to the second page of the specification of typical electrical performance measured curve.

Mechanical & Product Information

Product Number	RWGFT34-L
Product Type	Flexible Waveguide
Waveguide 1	WR34(R260), UBR260 Flange
Waveguide 2	WR34(R260), UBR260 Flange
Waveguide Body	Brass
Center Contact	Brass, silver plating