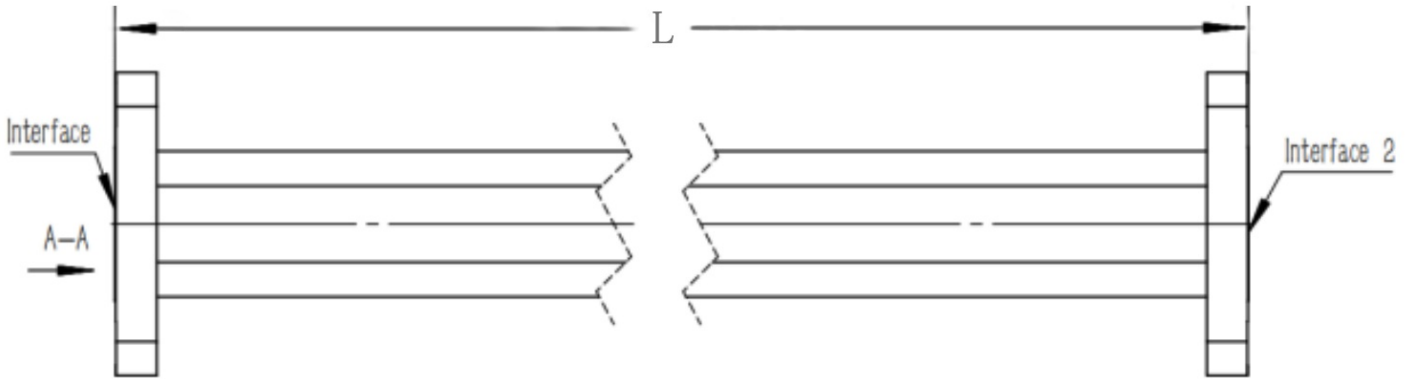


WR22(R400) Flexible Waveguide, RWGFT22-L 32.9-50.1GHz, 25W, , Twistable

Dimensions(mm) Tolerance $\pm 1\%$



Electrical & Environmental

Frequency Range	32.9-50.1GHz
VSWR	1.3 Max
Input Avg Power	25W @25°C
Min Bend Radius	38mm/E 76mm/H
Repeated Bend Radius	80mm/E 160mm/H
Max. Torsion Angle	510°/m
Operating Pressure	45psig Max
Temperature Range	-40°C~+75°C

Product Selection, Customizable

RFTOP P/N	L(mm)	L2(mm)	IL(dB)
-----------	-------	--------	--------

Notes

1. Customized services include: length and structure and flange type.
2. The marked loss is the theoretical estimated loss, for reference only, the specific product after processing test shall prevail.
3. Please refer to the second page of the specification of typical electrical performance measured curve.

Mechanical & Product Information

Product Number	RWGFT22-L
Product Type	Flexible Waveguide
Waveguide 1	WR22(R400),
Waveguide 2	WR22(R400),
Waveguide Body	Brass
Center Contact	Brass, silver plating