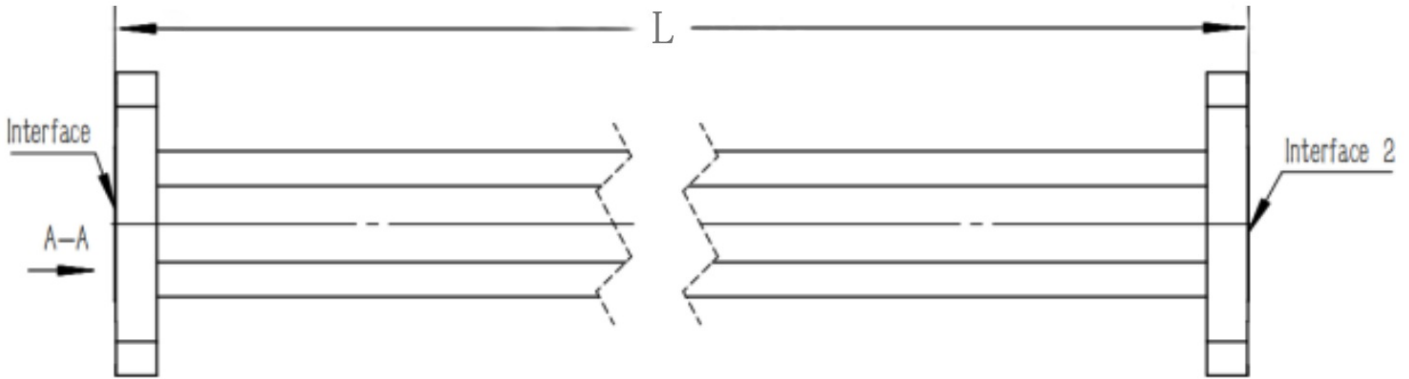


## WR137(R70) Flexible Waveguide, RWGFT137-L 5.38-8.17GHz, 2000W, UDR70 Flange, Twistable

### Dimensions(mm) Tolerance $\pm 1\%$



### Electrical & Environmental

Frequency Range	5.38-8.17GHz
VSWR	1.1 Max
Input Avg Power	2000W @25°C
Min Bend Radius	102mm/E 204mm/H
Repeated Bend Radius	400mm/E 800mm/H
Max. Torsion Angle	214°/m
Operating Pressure	30psig Max
Temperature Range	-40°C~+75°C

### Product Selection, Customizable

RFTOP P/N	L(mm)	L2(mm)	IL(dB)
-----------	-------	--------	--------

#### Notes

1. Customized services include: length and structure and flange type.
2. The marked loss is the theoretical estimated loss, for reference only, the specific product after processing test shall prevail.
3. Please refer to the second page of the specification of typical electrical performance measured curve.

### Mechanical & Product Information

Product Number	RWGFT137-L
Product Type	Flexible Waveguide
Waveguide 1	WR137(R70), UDR70 Flange
Waveguide 2	WR137(R70), UDR70 Flange
Waveguide Body	Brass
Center Contact	Brass, silver plating