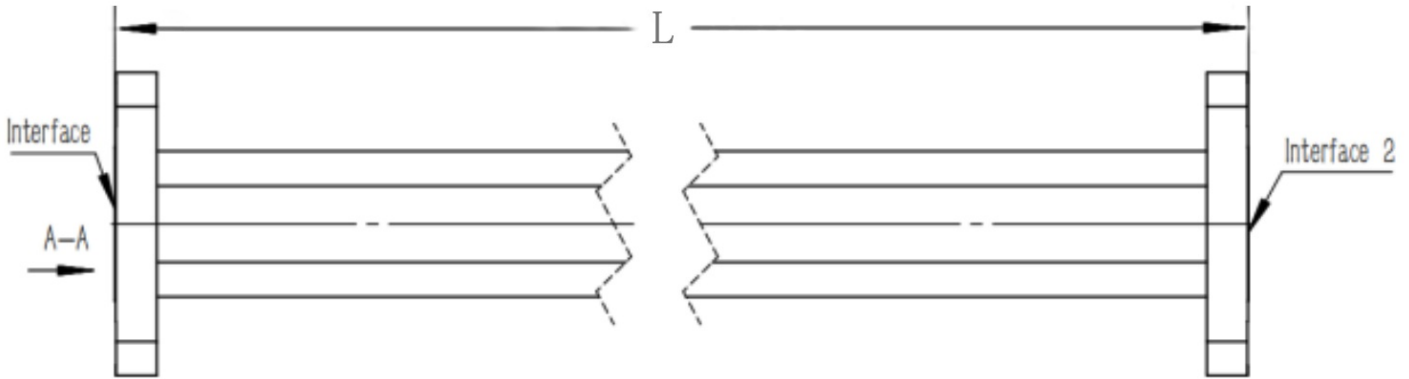


## WR112(R84) Flexible Waveguide, RWGFT112-L 6.57-9.99GHz, 1260W, UDR84 Flange, Twistable

### Dimensions(mm) Tolerance $\pm 1\%$



### Electrical & Environmental

Frequency Range	6.57-9.99GHz
VSWR	1.13 Max
Input Avg Power	1260W @25°C
Min Bend Radius	76mm/E 152mm/H
Repeated Bend Radius	328mm/E 656mm/H
Max. Torsion Angle	264°/m
Operating Pressure	35psig Max
Temperature Range	-40°C~+75°C

### Product Selection, Customizable

RFTOP P/N	L(mm)	L2(mm)	IL(dB)
-----------	-------	--------	--------

#### Notes

1. Customized services include: length and structure and flange type.
2. The marked loss is the theoretical estimated loss, for reference only, the specific product after processing test shall prevail.
3. Please refer to the second page of the specification of typical electrical performance measured curve.

### Mechanical & Product Information

Product Number	RWGFT112-L
Product Type	Flexible Waveguide
Waveguide 1	WR112(R84), UDR84 Flange
Waveguide 2	WR112(R84), UDR84 Flange
Waveguide Body	Brass
Center Contact	Brass, silver plating