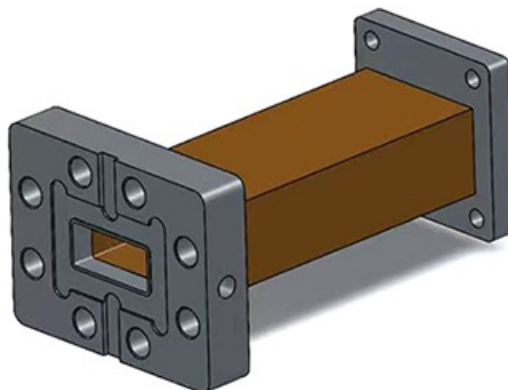


WR90(R100) Straight Waveguide, RWG90IU-L 8.2-12.5GHz, /UBR100 Flange, Vacuum Application

Dimensions(mm) Tolerance $\pm 1\%$



Electrical & Environmental

Frequency Range	8.2-12.5GHz
VSWR	1.05 Max
Temperature Range	-40°C~+70°C

Product Selection, Customizable		
RFTOP P/N	L(mm)	IL(dB)
RWG90IU-100	100	0.08

Mechanical & Product Information

Product Number	RWG90IU-L, Vacuum Application
Product Type	Straight Waveguide
Waveguide 1	WR90(R100),
Waveguide 2	WR90(R100), UBR100 Flange
Waveguide Body	Copper
Center Contact	Copper, pickling

Notes

1. Customized services include: length and structure and flange type.
2. The marked loss is the theoretical estimated loss, for reference only, the specific product after processing test shall prevail.
3. Please refer to the second page of the specification of typical electrical performance measured curve.