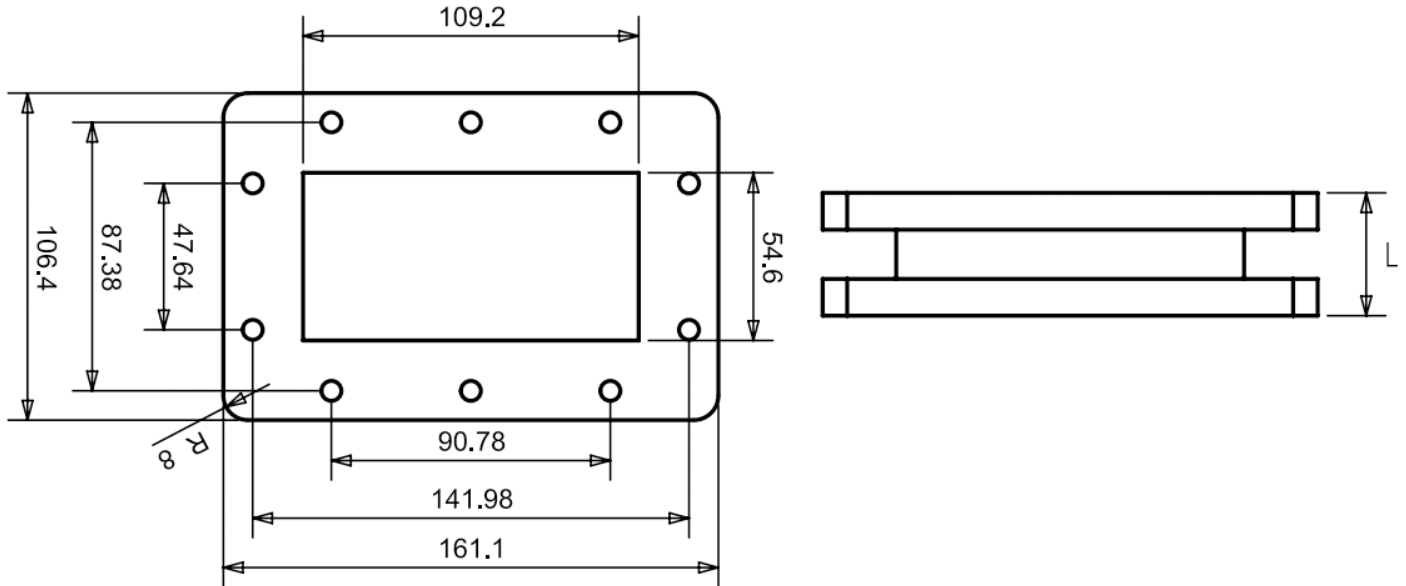




## WR430(BJ22) Straight Waveguide, RWG430-L 1.72-2.61GHz, FDP22(UDR) Flange

### Dimensions(mm) Tolerance $\pm 1\%$



### Electrical & Environmental

Frequency Range	1.72-2.61GHz
VSWR	1.1 Max
Temperature Range	-40°C to 70°C

Product Selection, Customizable		
RFTOP P/N	L(mm)	IL(dB)
RWG430-40	40	0.05
RWG430-150	150	0.05
RWG430-300	300	0.06

### Mechanical & Product Information

Product Number	RWG430-L
Product Type	Straight Waveguide
Waveguide 1	WR430(BJ22), FDP22(UDR) Flange
Waveguide 2	WR430(BJ22), FDP22(UDR) Flange
Waveguide Body	Aluminum, grey painted
Center Contact	Aluminum, electric conductive oxidation

#### Notes

1. Customized services include: length and structure and flange type.
2. The marked loss is the theoretical estimated loss, for reference only, the specific product after processing test shall prevail.
3. Please refer to the second page of the specification of typical electrical performance measured curve.



## WR430(BJ22) Straight Waveguide, RWG430-L 1.72-2.61GHz, FDP22(UDR) Flange

### Typical Test Data

