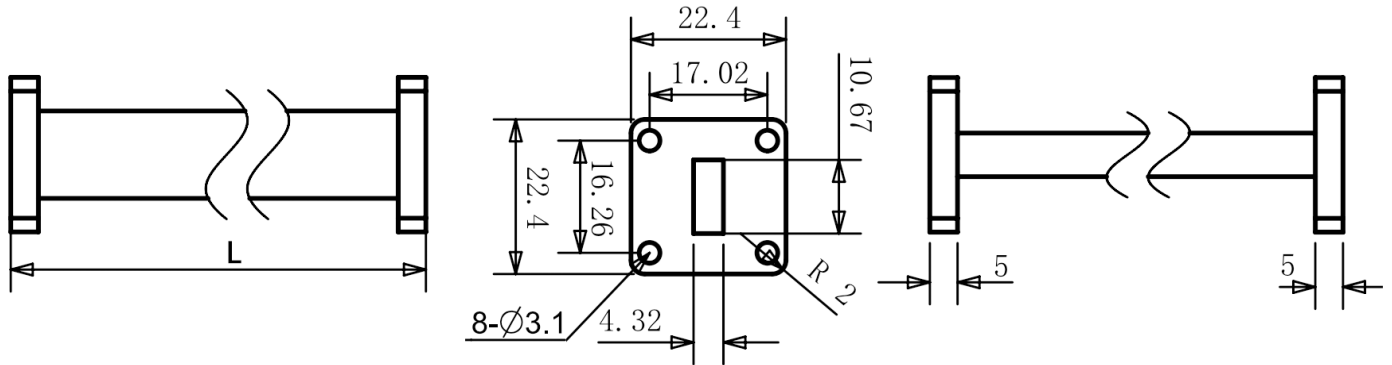




WR42(R220) Straight Waveguide, RWG42-L 17.6-26.7GHz, UBR220 Flange

Dimensions(mm) Tolerance $\pm 1\%$



Electrical & Environmental

Frequency Range	17.6-26.7GHz
VSWR	1.1 Max
Temperature Range	-40°C~+70°C

Mechanical & Product Information

Product Number	RWG42-L
Product Type	Straight Waveguide
Waveguide 1	WR42(R220), UBR220 Flange
Waveguide 2	WR42(R220), UBR220 Flange
Waveguide Body	Copper, grey painted
Center Contact	Copper pickling

Product Selection, Customizable

RFTOP P/N	L(mm)	IL(dB)
RWG42-50	50	0.10
RWG42-80	80	0.12
RWG42-100	100	0.14
RWG42-500	500	≤ 0.35
RWG42-1M	1000	≤ 0.65

Notes

1. Customized services include: length and structure and flange type.
2. The marked loss is the theoretical estimated loss, for reference only, the specific product after processing test shall prevail.
3. Please refer to the second page of the specification of typical electrical performance measured curve.



WR42(R220) Straight Waveguide, RWG42-L
17.6-26.7GHz, UBR220 Flange

Typical Test Data

