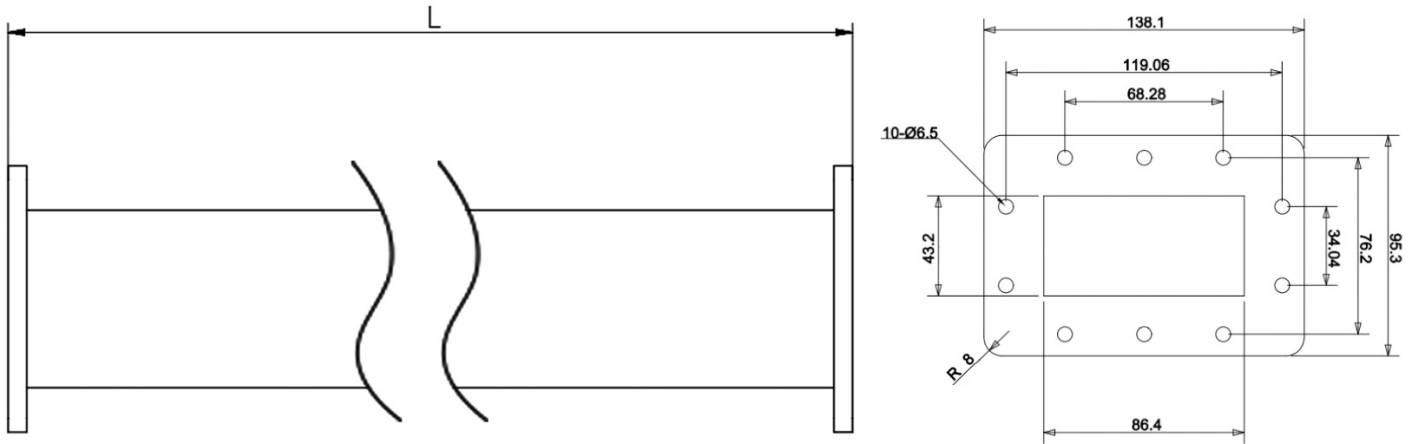


## WR340(R26) Straight Waveguide, RWG340-L 2.17-3.3GHz, UDR26 Flange

### Dimensions(mm) Tolerance $\pm 1\%$



### Electrical & Environmental

|                   |             |
|-------------------|-------------|
| Frequency Range   | 2.17-3.3GHz |
| Temperature Range | -40°C~+70°C |

### Mechanical & Product Information

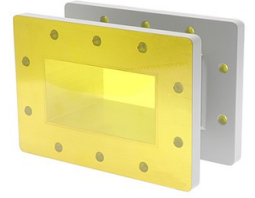
|                |   |
|----------------|---|
| Product Number | RWG340-L                                |
| Product Type   | Straight Waveguide                      |
| Waveguide 1    | WR340(R26), UDR26 Flange                |
| Waveguide 2    | WR340(R26), UDR26 Flange                |
| Waveguide Body | Aluminum, grey painted                  |
| Center Contact | Aluminum, electric conductive oxidation |

### Product Selection, Customizable

| RFTOP P/N  | L(mm) | IL(dB) |
|------------|-------|--------|
| RWG340-63  | 63    | 0.05   |
| RWG340-200 | 200   | 0.06   |

### Notes

1. Customized services include: length and structure and flange type.
2. The marked loss is the theoretical estimated loss, for reference only, the specific product after processing test shall prevail.
3. Please refer to the second page of the specification of typical electrical performance measured curve.



**WR340(R26) Straight Waveguide, RWG340-L**  
**2.17-3.3GHz, UDR26 Flange**

---

**Typical Test Data**

63mm  
□