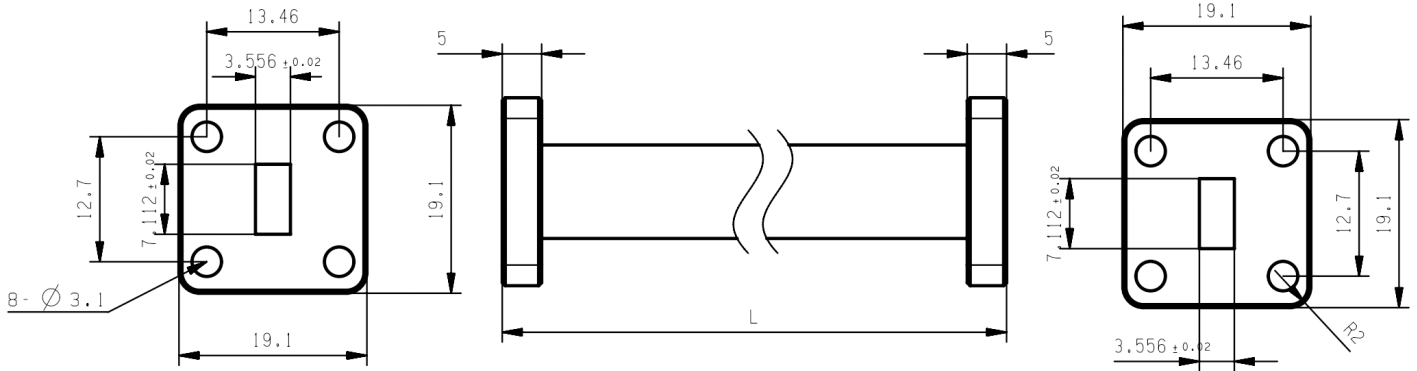


WR28(R320) Straight Waveguide, RWG28-L 26.3-40GHz, UBR320 Flange

Dimensions(mm) Tolerance $\pm 1\%$



Electrical & Environmental

Frequency Range	26.3-40GHz
VSWR	1.1 Max
Temperature Range	-40°C~+70°C

Product Selection, Customizable		
RFTOP P/N	L(mm)	IL(dB)
RWG28-50	50	≤ 0.05
RWG28-500	500	≤ 0.52
RWG28-1M	1000	≤ 1.00

Mechanical & Product Information

Product Number	RWG28-L
Product Type	Straight Waveguide
Waveguide 1	WR28(R320), UBR320 Flange
Waveguide 2	WR28(R320), UBR320 Flange
Waveguide Body	Copper, grey painted
Center Contact	Copper pickling

Notes

1. Customized services include: length and structure and flange type.
2. The marked loss is the theoretical estimated loss, for reference only, the specific product after processing test shall prevail.
3. Please refer to the second page of the specification of typical electrical performance measured curve.