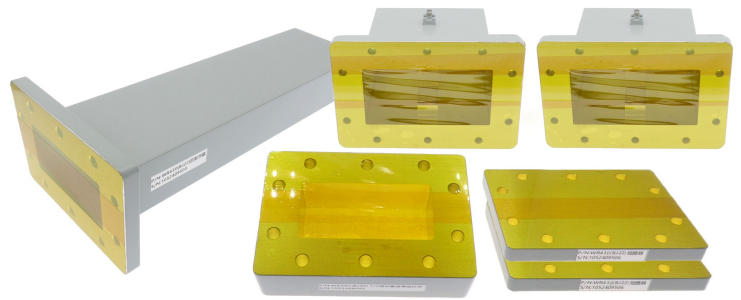




WR430(R22) Waveguide Calibration Kits, RWCK430S 1.72-2.61GHz, SMA Female, UDR22 Flange

Dimensions(mm) Tolerance \pm 1%



Electrical & Environmental

Frequency Range	1.72-2.61GHz
Temperature Range	-40°C~+85°C

Mechanical & Product Information

Product Number	RWCK430S
Product Type	Waveguide Calibration Kits
Connector	SMA Female
Waveguide 1	WR430(R22), UDR22 Flange
Waveguide Body	Aluminum, grey painted
Center Contact	Aluminum, electric conductive oxidation

RWCK430S List of Calibration Kit

Product Name	RFTOP P/N	VSWR	Qty
波导同轴转换器	RWR430S	1.2 Max	2
匹配负载	RWT430	1.03 Max	1
1/4波定长块	RWGQL430	-	1
短路块	RWGSC430	-	1
配套紧固螺丝	M6-30	-	30
包装箱	定制款	-	1

Notes

- Click on the list model to view the specification sheet for the model product.