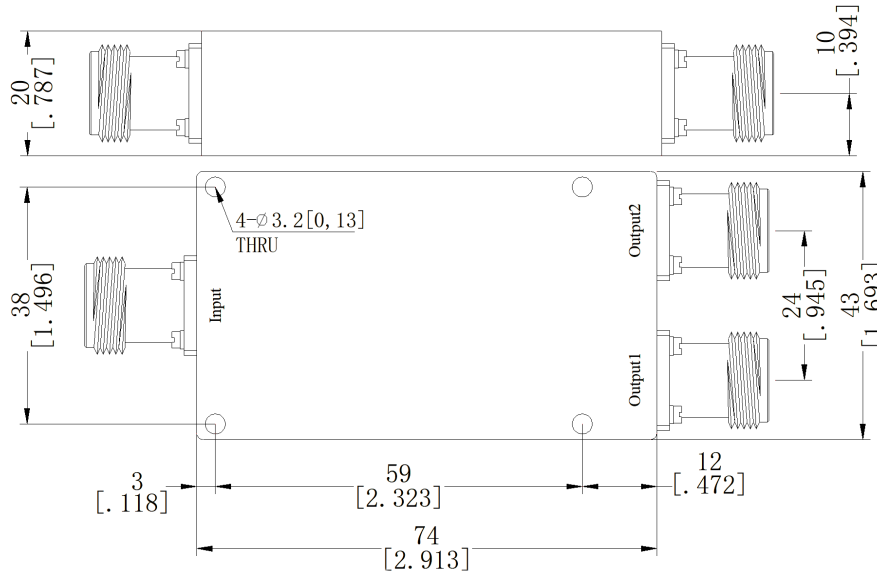


N 2 Way Microstrip Power Divider, RPD05F8N2 0.5-8GHz, 30W

Dimensions(mm) Tolerance±1%



Electrical & Environmental

Frequency Range	0.5-8GHz	Impedance	50 Ohm
Input Port VSWR	1.25 max (Typ.1.16)		
Output Port VSWR	1.25 max (Typ.1.12)		
Insertion Loss	1.8dB max (Excluding theoretical loss未含理论损耗3.0dB)		
Isolation	20dB min (Typ.25dB)		
Amplitude Balance	± 0.2dB		
Phase Balance	±3°		
Input Avg Power	30 Watts max @25°C (Derate linearly to 3 Watt at 100°C) (Combiner合路器用时2W)		
Operating Temp	-35°C ~ +75°C		

Mechanical & Product Information

Product Number	RPD05F8N2	Way	2
Connector	N Female	Connector Body	Passivated stainless steel
Center Contact	Gold plated beryllium copper		
Housing	Blue paint		
Dimensions	74×43×20mm	Net Weight	About 200.0g