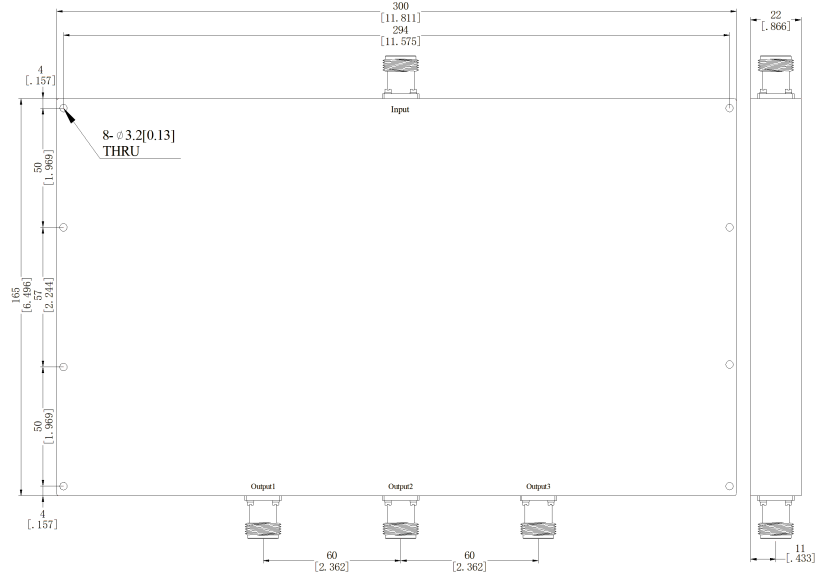


N 3 Way Microstrip Power Divider, RPD007F015N3W50 70-150MHz, 50W , E-Grade

Dimensions(mm) Tolerance±1%



Electrical & Environmental

Frequency Range	70-150MHz	Impedance	50 Ohm
Input Port VSWR	1.4 max (Typ.1.18)		
Output Port VSWR	1.25 max (Typ.1.16)		
Insertion Loss	1.2dB max (Excluding theoretical loss未含理论损耗4.8dB)		
Isolation	20dB min (Typ.26dB)		
Amplitude Balance	± 0.4dB		
Phase Balance	±4°		
Input Avg Power	50 Watts max @25°C (Derate linearly to 5 Watt at 100°C) (Combiner合路器用时3W)		
Operating Temp	-35°C ~ +75°C		

Mechanical & Product Information

Product Number	RPD007F015N3W50, E-Grade	Way	3
Connector	N Female	Connector Body	Ternary alloy plated brass
Center Contact	Gold plated beryllium copper		
Housing	Sandblasting natural color conductive oxide		
Dimensions	165×300×22mm	Net Weight	-