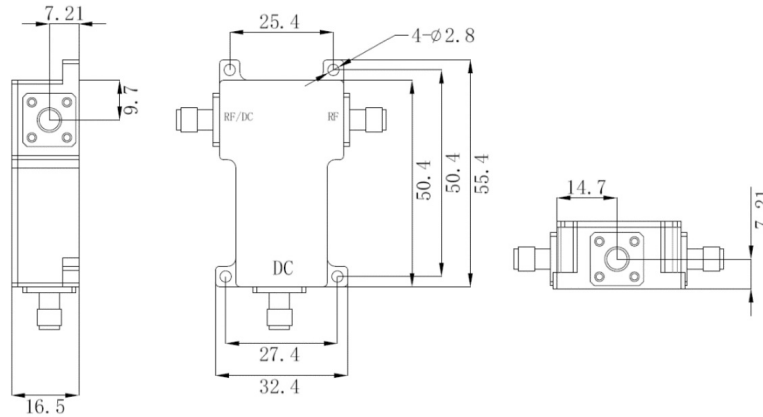


## SMA Female to SMA Female RF Bias Tees, RBT10M6S32

### 0.01-6GHz, DC 50V, 1A

#### Dimensions(mm) Tolerance $\pm 1\%$



#### Electrical & Environmental

|                        |              |                       |                        |
|------------------------|--------------|-----------------------|------------------------|
| <b>Frequency Range</b> | 0.01-6GHz    | <b>Impedance</b>      | 50 Ohm                 |
| <b>VSWR</b>            | 1.5 Max      | <b>Insertion Loss</b> | 1.2 dB Max , Typ 0.8dB |
| <b>Voltage</b>         | 50 Volts Max | <b>Avg Power</b>      | 10 Watts Max @25°C     |
| <b>DC Voltage</b>      | 50 Volts Max | <b>DC Current</b>     | 1.0 A Max              |
| <b>Isolation</b>       | 30 dB Min    | <b>Group Delay</b>    | -                      |

#### Mechanical & Product Information

|                       |                     |                       |  |
|-----------------------|---------------------|-----------------------|--|
| <b>Product Number</b> | RBT10M6S32, P-Grade | <b>Connector</b>      | SMA Female to SMA Female, DC Port SMA Female |
| <b>Connector Body</b> | Gold plated brass   | <b>Center Contact</b> | Gold plated beryllium copper                 |
| <b>Net Weight</b>     | About 20.0g         | <b>RoHS</b>           | Compliant                                    |

#### Typical Test Data