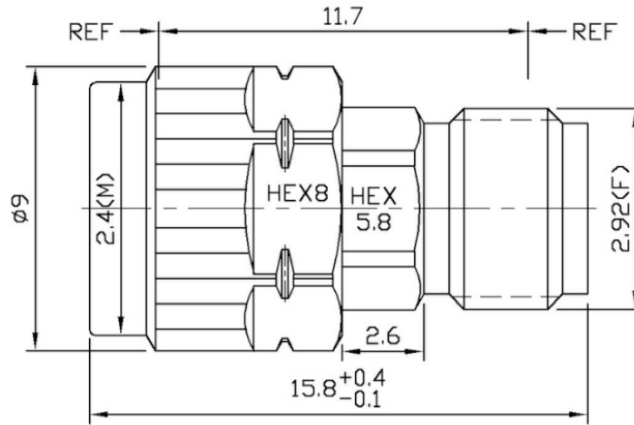


2.92mm Female to 2.4mm Male Inner DC Block, RB40KFUM60 10MHz-40GHz, 60V

Dimensions(mm) Tolerance±1%



Electrical & Environmental

Frequency Range	10MHz-40GHz	Impedance	50 Ohm
VSWR	1.35 Max	Insertion Loss	0.5 dB Max $\leq 0.08 \times \sqrt{F(\text{GHz})}$
Voltage	60 Volts Max	Input Avg Power	3 Watts Max @25°C

Mechanical & Product Information

Product Number	RB40KFUM60	Connector	2.92mm Female to 2.4mm Male
Connector Body	Passivated stainless steel	Center Contact	1.27um Gold plated beryllium copper
Net Weight	-	RoHS	Compliant

Typical Test Data