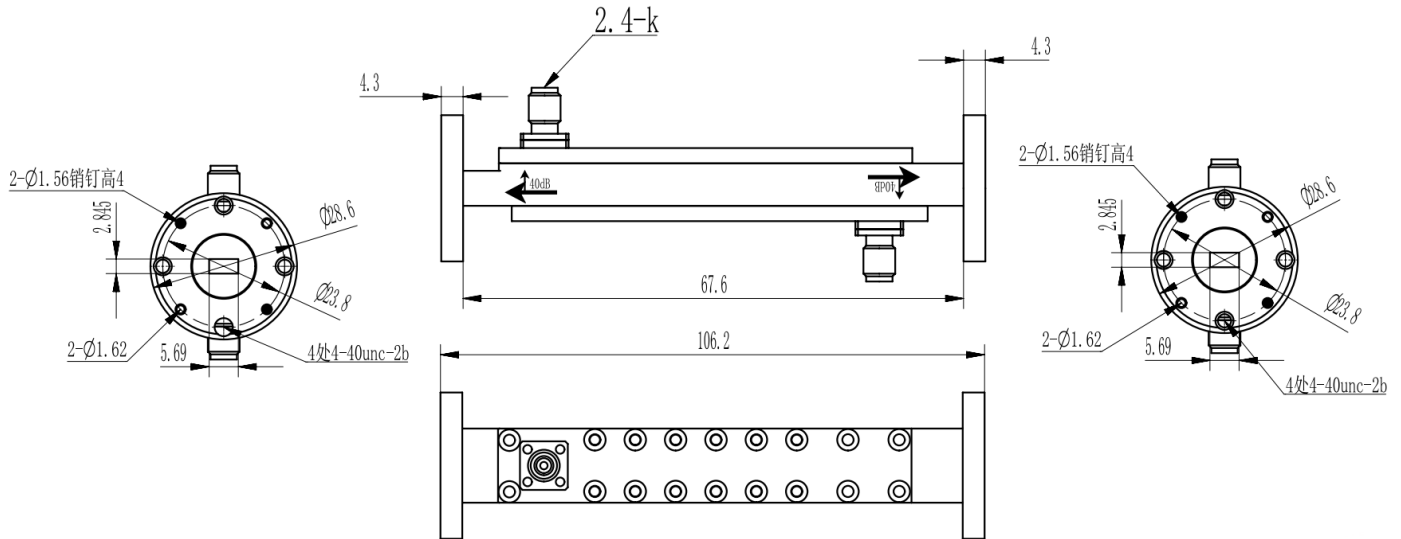


## WR22 Waveguide Dual Directional Coupler, 2.4mm Female Coupled Port, RWDCD22U25-40

### 32.9-50.1GHz, Coupling 40dB, FUGP400 Circular Flange

#### Dimensions(mm) Tolerance $\pm 1\%$



#### Electrical & Environmental

<b>Frequency Range</b>	32.9-50.1GHz	<b>Impedance</b>	50 Ohm
<b>VSWR Primary</b>	1.1 Max		
<b>VSWR Secondary</b>	1.5 Max		
<b>Insertion Loss</b>	0.5dB Max		
<b>Directivity</b>	25dB Min		
<b>Nominal Coupling</b>	40 $\pm$ 1.0dB		

#### Mechanical & Product Information

<b>Product Number</b>	RWDCD22U25-40, P-Grade	<b>Product Type</b>	Waveguide Dual Directional Coupler
<b>Waveguide</b>	WR22(BJ400), FUGP400 Circular Flange	<b>Waveguide Body</b>	Copper, gold plated
<b>Coupled Port</b>	2.4mm Female	<b>Connector Body</b>	Passivated stainless steel
<b>Center Contact</b>	Copper, gold plated		
<b>Housing</b>	Copper, gold plated		
<b>Dimensions</b>	106.2 $\times$ 28.6mm	<b>Net Weight</b>	-



Microwave and Millimeter wave products  
supplier

RFTOP® Technology Co., Ltd.  
[www.rftop.com](http://www.rftop.com) [service@rftop.com](mailto:service@rftop.com) 86-755-88840350