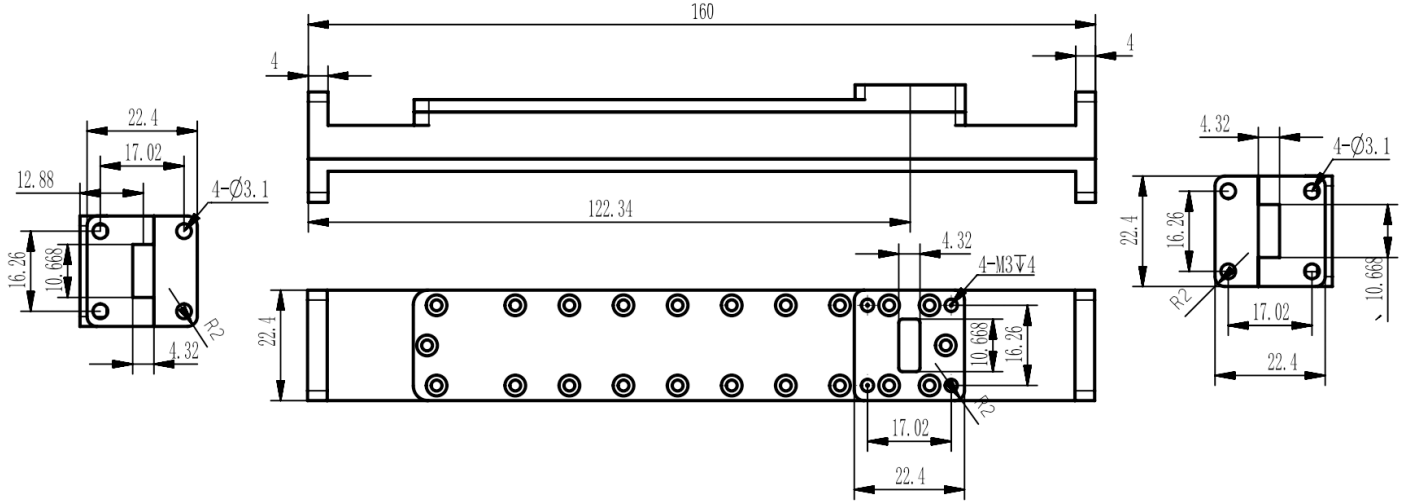


WR42 Waveguide Directional Coupler, RWDC42-20 22-24GHz, Coupling 20dB, FBP220(UBR) Flange

Dimensions(mm) Tolerance $\pm 1\%$



Electrical & Environmental

Frequency Range	22-24GHz	Impedance	50 Ohm
VSWR Primary	1.1 Max		
VSWR Secondary	1.25 Max		
Insertion Loss	dB Max		
Directivity	30dB Min		
Nominal Coupling	20 \pm 0.75dB		

Mechanical & Product Information

Product Number	RWDC42-20, P-Grade	Product Type	Waveguide Directional Coupler
Waveguide	WR42(BJ220), FBP220(UBR) Flange	Waveguide Body	Aluminum, grey painted
Center Contact	Aluminum, electric conductive oxidation		
Housing	Grey paint		
Dimensions	160 \times 22.4 \times 22.4mm	Net Weight	-