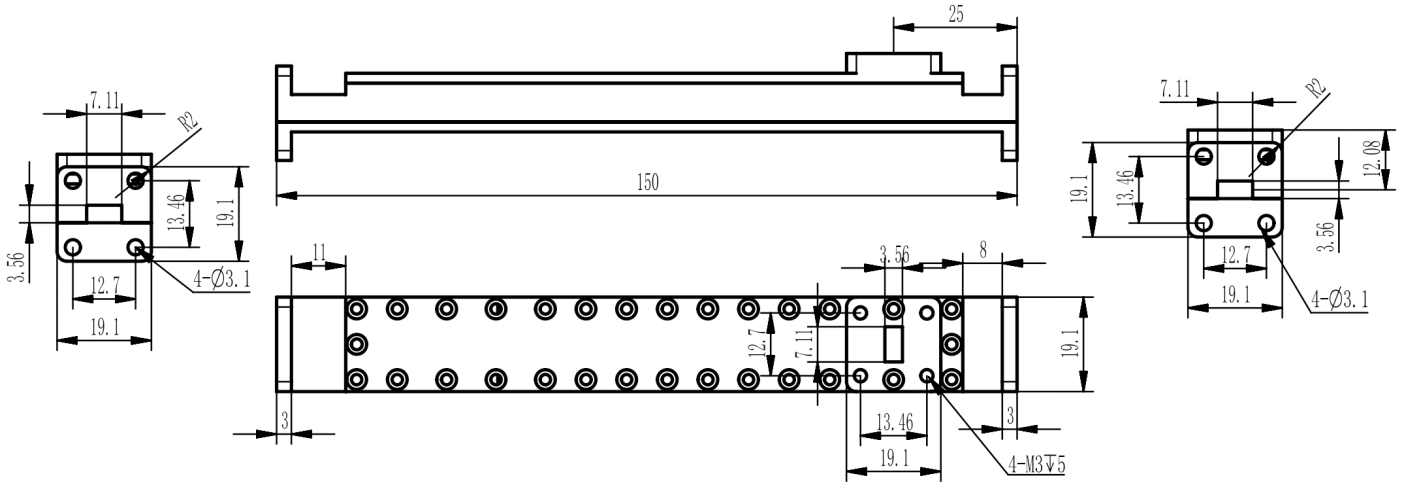


## WR28 Waveguide Directional Coupler, RWDC28-10 26.5-40GHz, Coupling 10dB, FBP320(UBR) Flange

Dimensions(mm) Tolerance $\pm 1\%$



### Electrical & Environmental

Frequency Range	26.5-40GHz	Impedance	50 Ohm
VSWR Primary	1.2 Max		
VSWR Secondary	1.25 Max		
Insertion Loss	dB Max		
Directivity	40dB Min		
Nominal Coupling	10 $\pm$ 1.0dB		

### Mechanical & Product Information

Product Number	RWDC28-10, P-Grade	Product Type	Waveguide Directional Coupler
Waveguide	WR28(BJ320), FBP320(UBR) Flange	Waveguide Body	Aluminum, grey painted
Center Contact	Aluminum, electric conductive oxidation		
Housing	Grey paint		
Dimensions	150 $\times$ 19.1 $\times$ 19.1mm	Net Weight	-