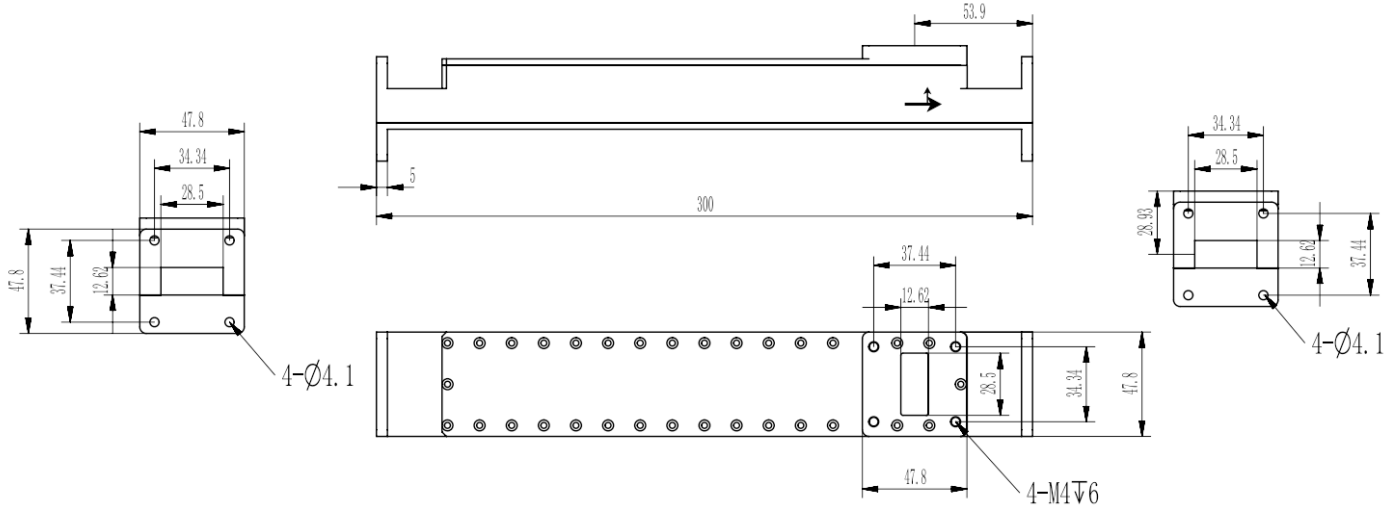


WR112 Directional Waveguide Coupler, RWDC112-30 6.57-9.99GHz, Coupling 30dB, UBR84 Flange

Dimensions(mm) Tolerance $\pm 1\%$



Electrical & Environmental

Frequency Range	6.57-9.99GHz
VSWR Primary	1.1 Max
VSWR Secondary	1.3 Max
Nominal Coupling	30dB ± 1.0 dB
Directivity	30dB Min

Mechanical & Product Information

Product Number	RWDC112-30, P-Grade, High Directional	Product Type	Waveguide Coupler
Waveguide	WR112(BJ84), UBR84 Flange	Waveguide Body	Aluminum, grey painted
Center Contact	Aluminum, electric conductive oxidation		
Housing	Grey paint		
Dimensions	300 \times 47.8 \times 47.8mm	Net Weight	-