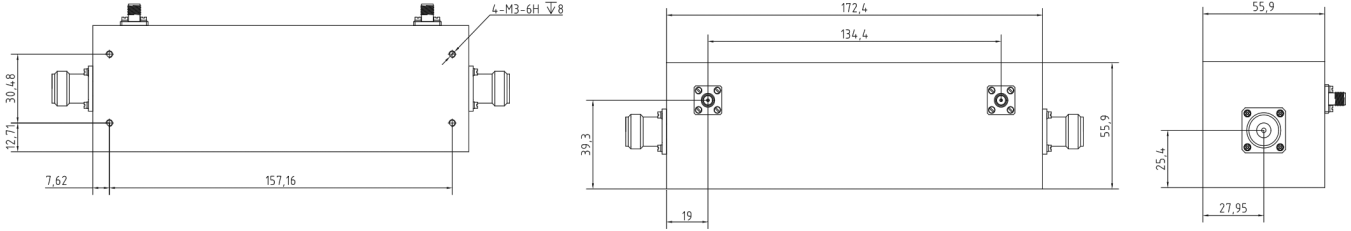


## N Dual Directional Coaxial Coupler, RDCDK9FM100NW2000-50 9KHz-100MHz, Coupling 50dB, 2000W

### Dimensions(mm) Tolerance $\pm 1\%$



### Electrical & Environmental

<b>Frequency Range</b>	9KHz-100MHz	<b>Impedance</b>	50 Ohm
<b>VSWR Primary</b>	1.15 Max		
<b>VSWR Secondary</b>	1.3 Max		
<b>Insertion Loss</b>	0.15dB Max		
<b>Directivity</b>	20dB Min		
<b>Frequency Sensitivity</b>	$\pm 0.5$ dB		
<b>Nominal Coupling</b>	50 $\pm 1.0$ dB		
<b>Input Avg Power</b>	2000 Watts max @25°C (Derate linearly to 200 Watt at 100°C)		
<b>Operating Temp</b>	-55°C~+85°C		

### Mechanical & Product Information

<b>Product Number</b>	RDCDK9FM100NW2000-50	<b>Product Type</b>	Coaxial Coupler
<b>Connector</b>	N Female	<b>Connector Body</b>	Passivated stainless steel
<b>Center Contact</b>	Gold plated beryllium copper		
<b>Housing</b>	Sandblasting natural color conductive oxide		
<b>Dimensions</b>	172.4(L)×55.9(W)×55.9(H)mm	<b>Net Weight</b>	-