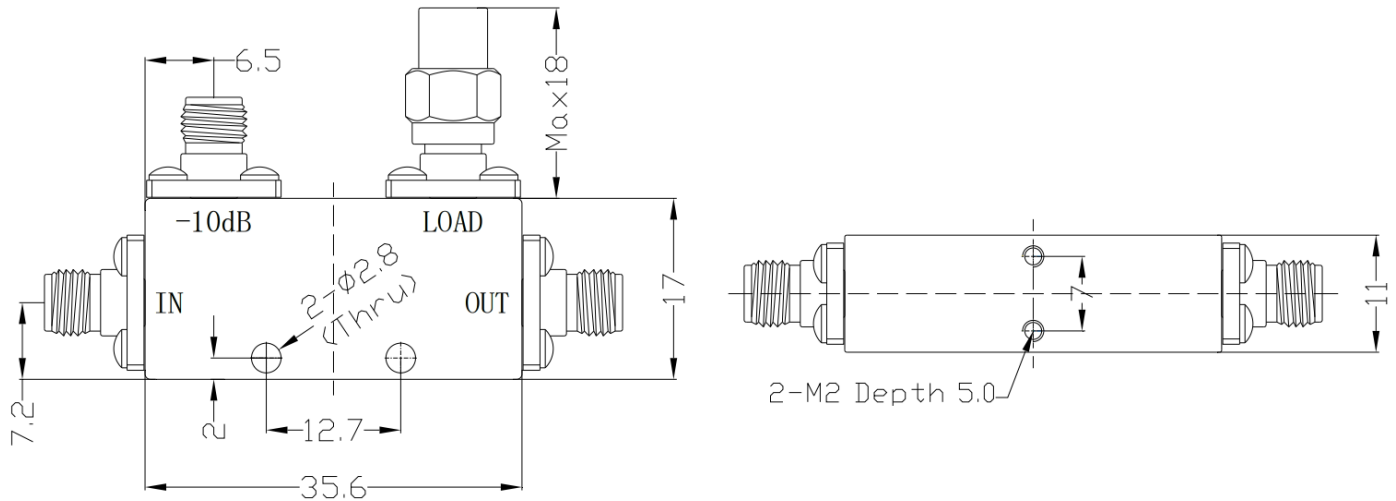


SMA Directional Coupler, RDC7F9S-10 7-9GHz, Coupling 10dB, 50W

Dimensions(mm) Tolerance $\pm 1\%$



Electrical & Environmental

Frequency Range	7-9GHz	Impedance	50 Ohm
VSWR Primary	1.4 Max		
VSWR Secondary	Max		
Insertion Loss	0.5dB Max (Excluding Coupling Loss 0.46dB)		
Directivity	15dB Min		
Frequency Sensitivity	± 0.7 dB		
Nominal Coupling	10 ± 0.7 dB		
Input Avg Power	50 Watts max @25°C (Derate linearly to 5 Watt at 100°C) Reflected: 2W Max.		
Operating Temp	-40°C~+80°C		

Mechanical & Product Information

Product Number	RDC7F9S-10	Product Type	Directional Coupler
Connector	SMA Female	Connector Body	Passivated stainless steel
Center Contact	Gold plated beryllium copper		
Housing	Light blue paint		
Dimensions	35.6×17×11mm	Net Weight	About 30.0g