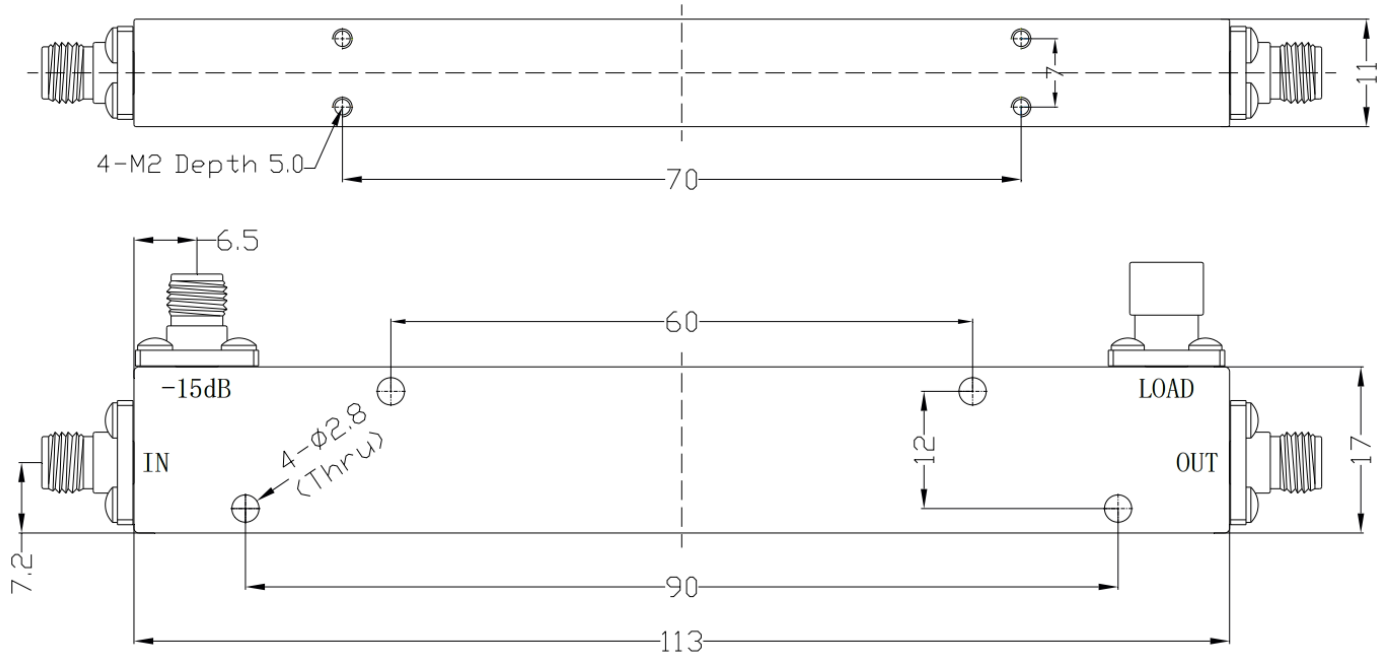


SMA Directional Coupler, RDC05F6S-15

0.5-6GHz, Coupling 15dB, 50W

Dimensions(mm) Tolerance $\pm 1\%$



Electrical & Environmental

Frequency Range	0.5-6GHz	Impedance	50 Ohm
VSWR Primary	1.3 Max		
VSWR Secondary	Max		
Insertion Loss	0.6dB Max (Excluding Coupling Loss 0.14dB)		
Directivity	15dB Min		
Frequency Sensitivity	± 1.0 dB		
Nominal Coupling	15 ± 1.0 dB		
Input Avg Power	50 Watts max @25°C (Derate linearly to 5 Watt at 100°C) Reflected: 2W Max.		
Operating Temp	-40°C~+80°C		

Mechanical & Product Information

Product Number	RDC05F6S-15	Product Type	Directional Coupler
Connector	SMA Female	Connector Body	Passivated stainless steel
Center Contact	Gold plated beryllium copper		
Housing	Light blue paint		
Dimensions	113 \times 17 \times 11mm	Net Weight	About 70.0g