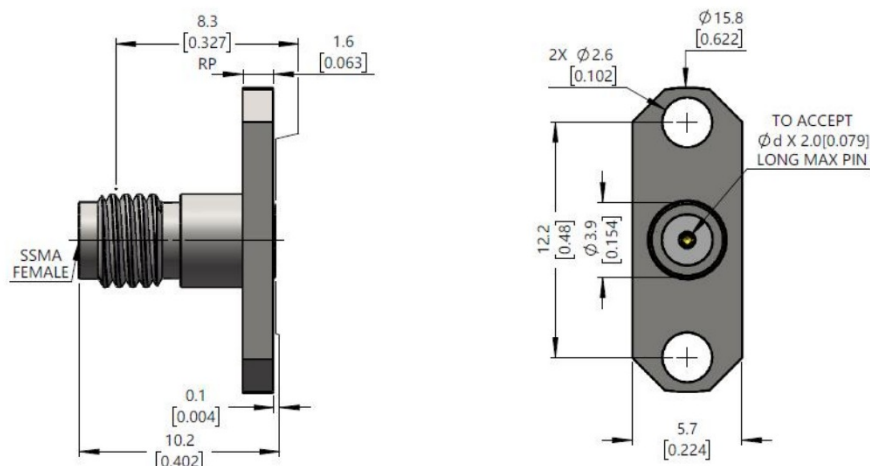


SSMA Female Field Replaceable Connector, RC40SAF-UF2D04-XX

DC-40GHz, Straight, 2 hole flange, 12.2mm Hole Spacing

Dimensions(mm) Tolerance $\pm 1\%$



Product Selection

D(mm)	RFTOP P/N
0.23	RC40SAF-UF2D04-023
0.30	RC40SAF-UF2D04-030
0.38	RC40SAF-UF2D04-038
0.46	RC40SAF-UF2D04-046
0.51	RC40SAF-UF2D04-051

Electrical & Environmental

Frequency Range	DC-40GHz	Impedance	50 ohm
VSWR	1.2 max	Withstand Voltage	500 V
Insulation Resistance	$\geq 1000 \text{ M}\Omega$	Contact Resistance	$\leq \text{In:}5.0/\text{Out:}2.5 \text{ m}\Omega$
Mating Cycles	> 500 Cycles	Temperature Range	-55°C~+165°C

Mechanical & Product Information

Product Number	RC40SAF-UF2D04-XX	Connector	SSMA Female
Shape/Mounting	Straight , 2 hole flange	Attachment Method	Field Replaceable
Connector Body	Passivated stainless steel	Insulator	PTFE&PEI
Center Contact	Gold plated beryllium copper		
Dimension	10.2(L)mm	Net Weight	-