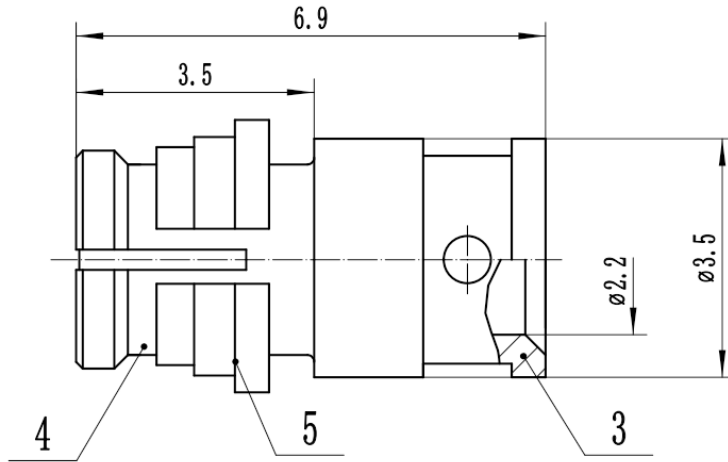




**SMP Female Cable Connector, RC40PFB-BG405**  
**DC-40GHz, Straight, Attachment for RG405 Cable**

**Dimensions(mm) Tolerance±1%**



**Electrical & Environmental**

<b>Frequency Range</b>	DC-40GHz	<b>Impedance</b>	50 ohm
<b>VSWR</b>	1.3 Max	<b>Withstand Voltage</b>	500 V
<b>Mating Cycles</b>	> 500 Cycles	<b>Temperature Range</b>	-55°C ~ +155°C

**Mechanical & Product Information**

<b>Product Number</b>	RC40PFB-BG405	<b>Connector</b>	SMP(GPO) Female
<b>Shape/Mounting</b>	Straight	<b>Attachment Method</b>	Solder
<b>Attachment for</b>	RG405 Series Cable		
<b>Connector Body</b>	Gold plated beryllium copper	<b>Insulator</b>	PTFE
<b>Center Contact</b>	Gold plated beryllium copper		
<b>Dimension</b>	6.9(L)mm	<b>Net Weight</b>	-