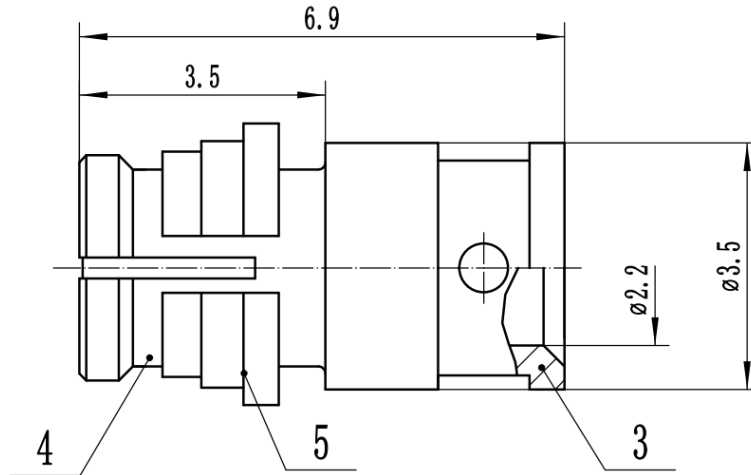




SMP(GPO) Female Cable Connector, RC40PF-B405-GBC
DC-40GHz, Straight, Attachment for RG405Series Cable

Dimensions(mm) Tolerance±1%



Electrical & Environmental

Frequency Range	DC-40GHz
Impedance	50 ohm
VSWR	1.3 max
Insulation Resistance	$\geq 5000 \text{ M}\Omega$
Withstand Voltage	500 V
Mating Cycles	> 500 Cycles
Temperature Range	-55°C ~ +155°C

Mechanical & Product Information

Product Number	RC40PF-B405-GBC
Product Type	SMP(GPO) Female, Cable Connector
Shape/Mounting	Straight
Attachment Method	Solder
Attachment for	RG405 Series Cable
Connector Body	Gold plated beryllium copper
Center Contact	Gold plated beryllium copper
Insulator	PTFE
Dimension	6.9(L)*3.5(ϕ)mm