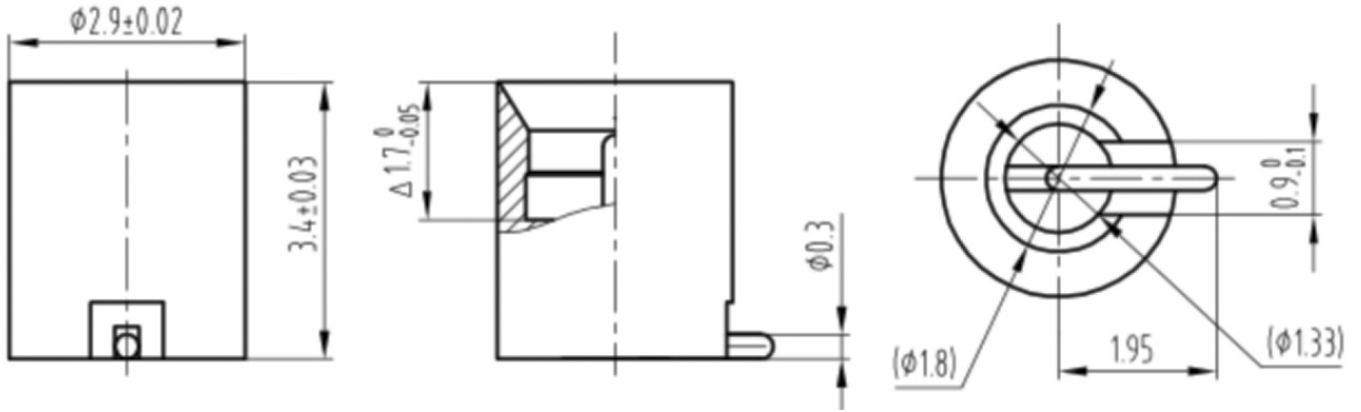




**SSMP(GPPO,SMPM) Male Smooth Bore PCB Connector, RC30SPMS-SSM03-GBA**  
**DC-30GHz, Straight, 0.3mm Pin**

**Dimensions(mm) Tolerance±1%**



**Electrical & Environmental**

Frequency Range	DC-30GHz
Impedance	50 ohm
VSWR	1.6 max
Insulation Resistance	≥ 5000 MΩ
Withstand Voltage	500 V
Mating Cycles	> 500 Cycles
Temperature Range	-55°C~+125°C

**Mechanical & Product Information**

Product Number	RC30SPMS-SSM03-GBA
Product Type	SSMP Male Smooth Bore, PCB Connector
Shape/Mounting	Straight
Attachment Method	Solder
Connector Body	Gold plated brass
Center Contact	Gold plated beryllium copper
Insulator	PEEK
Dimension	3.4(L)mm
Net Weight	About .2g



Microwave and Millimeter wave products  
supplier

RFTOP® Technology Co., Ltd.  
[www.rftop.com](http://www.rftop.com) [service@rftop.com](mailto:service@rftop.com) 86-755-88840350