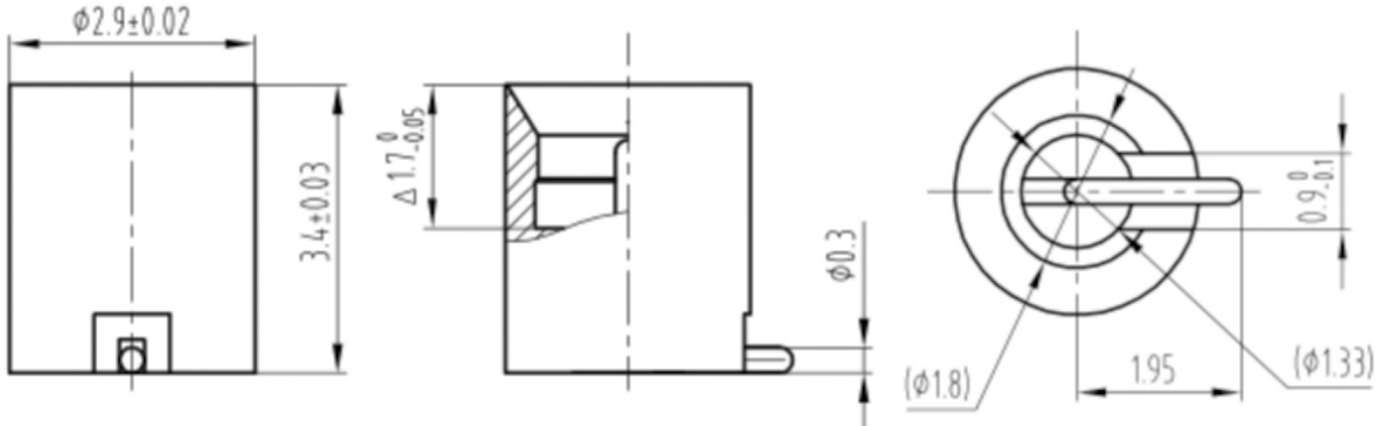


SSMP(GPPO,SMPP) Male Full Detent PCB Connector, RC30SPMF-SSM03-GBA

DC-30GHz, Straight, 0.3mm Pin

Dimensions(mm) Tolerance $\pm 1\%$



Electrical & Environmental

Frequency Range	DC-30GHz
Impedance	50 ohm
VSWR	1.6 max
Insulation Resistance	$\geq 5000 \text{ M}\Omega$
Withstand Voltage	500 V
Mating Cycles	> 500 Cycles
Temperature Range	-55°C~+125°C

Mechanical & Product Information

Product Number	RC30SPMF-SSM03-GBA
Product Type	SSMP Male Full Detent, PCB Connector
Shape/Mounting	Straight
Attachment Method	Solder
Connector Body	Gold plated brass
Center Contact	Gold plated beryllium copper
Insulator	PEEK
Dimension	3.4(L)mm



Microwave and Millimeter wave products
supplier

RFTOP® Technology Co., Ltd.
www.rftop.com service@rftop.com 86-755-88840350